



XGS12 Chassis Platform Assembly Guide

Version 1.0

Release 8.00 EA,

December 2015



Copyright and Disclaimer

Copyright © 2015 Ixia. All rights reserved.

This publication may not be copied, in whole or in part, without Ixia's consent.

RESTRICTED RIGHTS LEGEND: Use, duplication, or disclosure by the U.S. Government is subject to the restrictions set forth in subparagraph (c)(1)(ii) of the Rights in Technical Data and Computer Software clause at DFARS 252.227-7013 and FAR 52.227-19.

Ixia, the Ixia logo, and all Ixia brand names and product names in this document are either trademarks or registered trademarks of Ixia in the United States and/or other countries. All other trademarks belong to their respective owners.

The information herein is furnished for informational use only, is subject to change by Ixia without notice, and should not be construed as a commitment by Ixia. Ixia assumes no responsibility or liability for any errors or inaccuracies contained in this publication.

Corporate Headquarters	Ixia Worldwide Headquarters 26601 W. Agoura Rd. Calabasas, CA 91302 USA +1 877 FOR IXIA (877 367 4942) +1 818 871 1800 (International) (FAX) +1 818 871 1805 sales@ixiacom.com	Web site: www.ixiacom.com General: info@ixiacom.com Investor Relations: ir@ixiacom.com Training: training@ixiacom.com Support: support@ixiacom.com +1 818 595 2599
EMEA	Ixia Europe Limited Part 2nd floor, Clarion House, Norreys Drive Maidenhead, UK SL6 4FL +44 (1628) 408750 FAX +44 (1628) 639916 salesemea@ixiacom.com	Support: support-emea@ixiacom.com +40 21 301 5699
Asia Pacific	Ixia Pte Ltd 210 Middle Road #08-01 IOI Plaza Singapore 188994	Support: support-asiapac@ixiacom.com +91 80 4939 6410
Japan	Ixia KK Nishi-Shinjuku Mitsui Bldg 11F 6-24-1, Nishi-Shinjuku, Shinjuku-ku	Support: support-japan@ixiacom.com +81 3 5326 1980

	Tokyo 160-0023 Japan	
India	Ixia Technologies Pvt Ltd Tower 1, 7th Floor, UMIYA Business Bay Cessna Business Park Survey No. 10/1A, 10/2, 11 & 13/2 Outer Ring Road, Varthur Hobli Kadubeesanahalli Village Bangalore East Taluk Bangalore-560 037, Karnataka, India +91 80 42862600	Support: support-india@ixiacom.com +91 80 4939 6410
China	Ixia Technologies (Shanghai) Company Ltd Unit 3, 11th Floor, Raffles City, Beijing Beijing, 100007 P.R.C.	Support: support-china@ixiacom.com 400 898 0598 (Greater China Region) +86 10 5732 3932 (Hong Kong)
<i>Change: 4150211, Date: September 24, 2013</i>		

[This page intentionally left blank]

Contents

Introduction	1
XGS12 Chassis Modules	3
Install XGS12 Chassis	5
XGS12 Chassis Installation Precautions	5
Un-pack and Mount the Chassis	6
Remove and Insert Processor Module	7
Remove and Insert Power Supply Module	8
Remove and Insert Fan Module	11
Log on to XGS12 Chassis	13

[This page intentionally left blank]

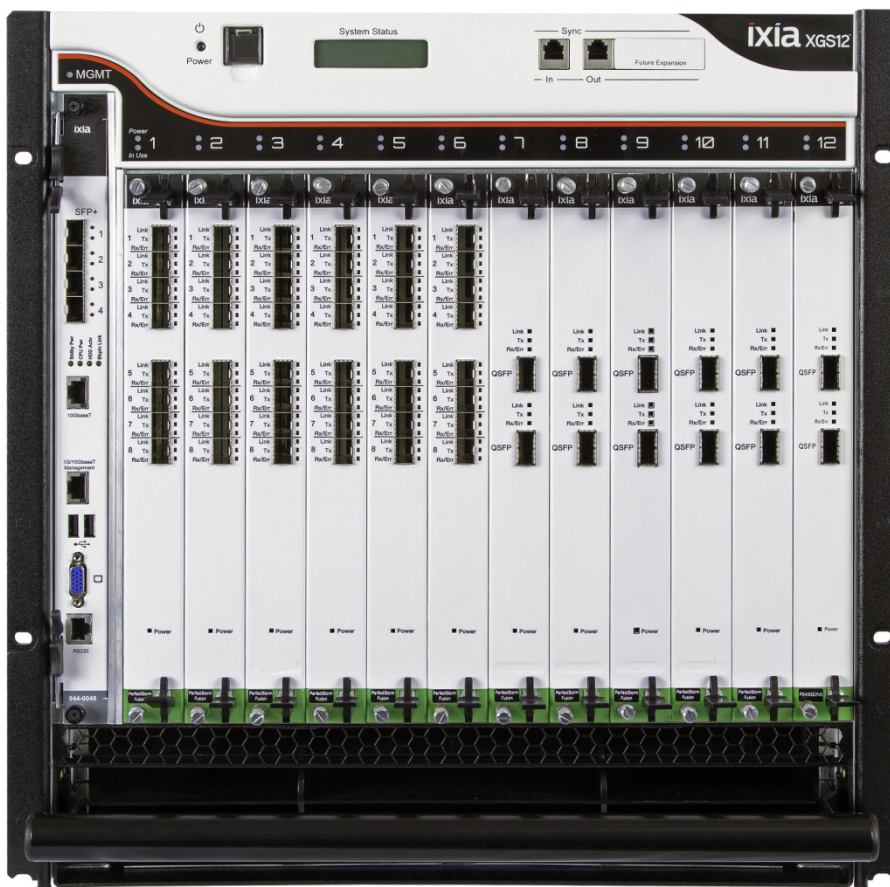
Introduction

This document describes how to install the XGS12 chassis and its various modules.

The XGS12 Chassis is the next generation high performance platform capable of supporting all XM form factor load modules, including full chassis configurations of the Xcellon load modules. It is a 12-slot chassis with high speed backplane (160 Gbps between each adjacent two cards) designed for aggregation across load modules.

XGS12 supports both IxLoad and BreakingPoint software applications. The chassis architecture supports easy setup and management of high scale, multiuser system. It has a pluggable system controller for chassis management. Additional applications and load modules will be supported in future software releases.

Figure: XGS12 Chassis



[This page intentionally left blank]

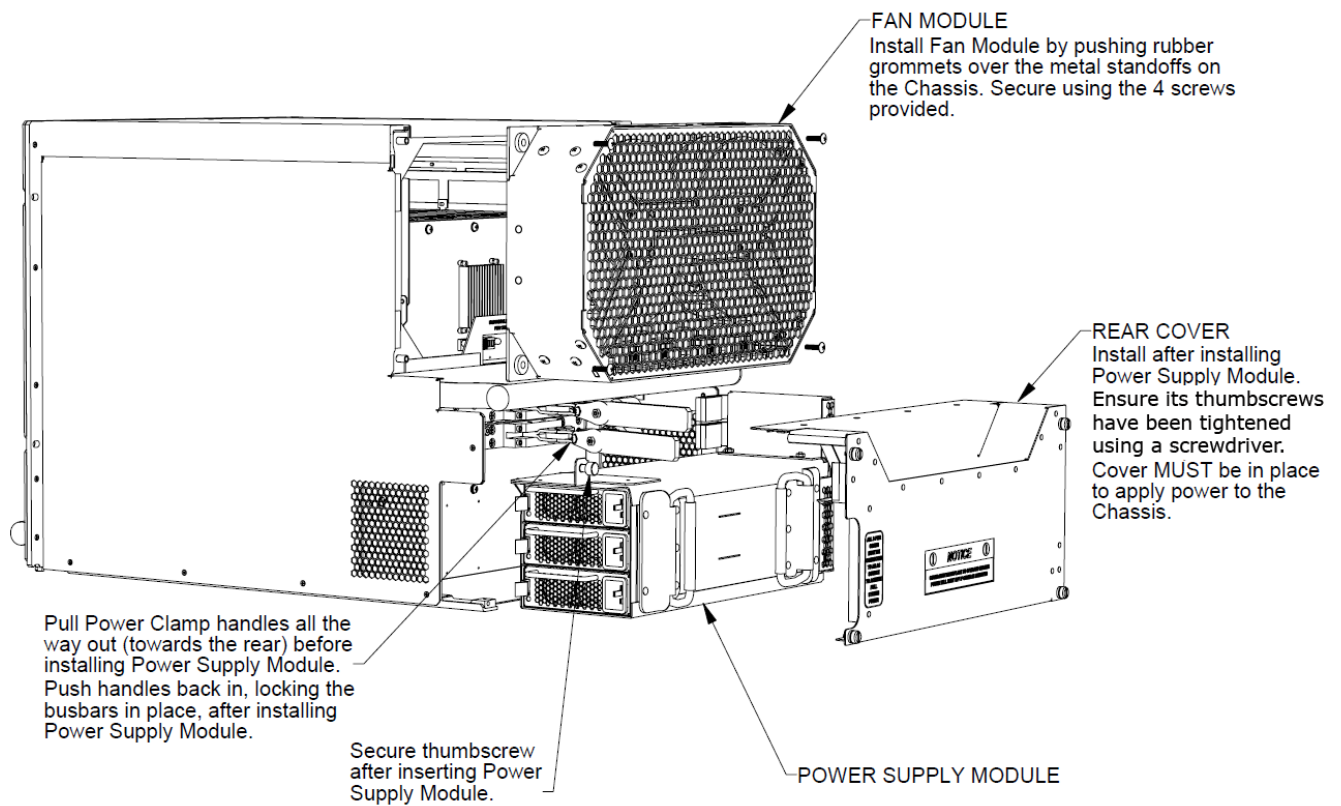
XGS12 Chassis Modules

The modules that make up the chassis are as follows:

- Chassis Frame Module
- Chassis Fan Module
- Chassis Power Supply Module
- Chassis Processor Module

The Processor Module is plugged into the front of the chassis, in slot 0. The power supplies and fans are accessible from the rear of the chassis. Each of the modular components is capable of being removed in the field and replaced with minimum downtime.

Figure: XGS12 Chassis Back View



[This page intentionally left blank]

Install XGS12 Chassis

The following sections describe the installation procedure:

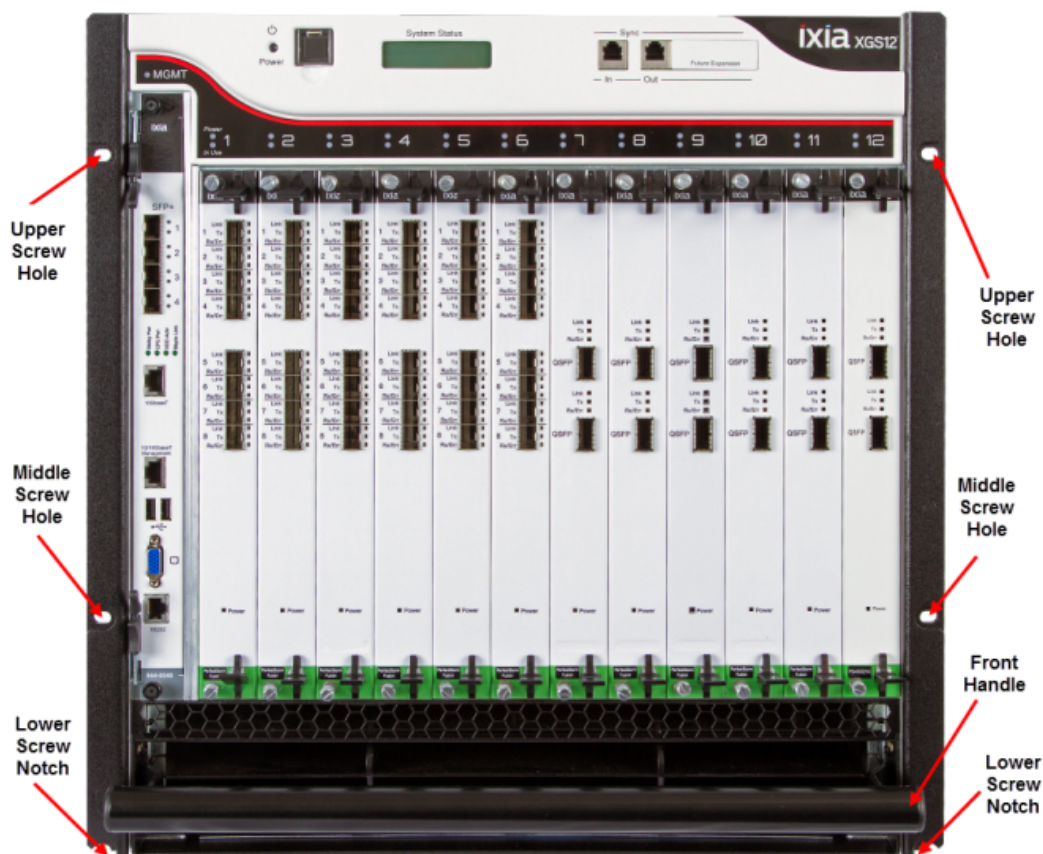
- [Un-pack and Mount the Chassis](#)
- [Remove and Insert Processor Module](#)
- [Remove and Insert Power Supply Module](#)
- [Remove and Insert Fan Module](#)

XGS12 Chassis Installation Precautions

The following precautions should be followed while installing the XGS12 chassis:

- A two person lift is recommended when installing the chassis into the rack.
- Ensure that each person is properly grounded during installation of either the chassis (onto the rack) or load modules (into the chassis) to prevent an ESD event.
- Install the chassis in the rack before installing the power supply module, fan module and load modules, thereby reducing the weight of the chassis.
- Use the two lower bolts meant for securing the chassis to a rack, to hold the chassis frame in place while securing all of the other bolts.
- Secure the chassis to rack face with all six bolts. Fully depress power supply clamps when installing power supply module.
- Secure the power supply module thumb bolt when installing power supply module.
- Install the rear power supply cover before applying AC power. After removing or installing this cover, ensure that the thumbscrews are tightened down with a 'Flat Blade' screwdriver. Exercise caution when tightening to prevent cross threading of the screws to the chassis.
- Ensure that the rack where the XG(S)12 Chassis is installed provides 200-240 VAC.
- Do not use AC power other than 200-240 VAC. The chassis is designed to be operated using all three 200-240 VAC power supplies.
- Do not use the chassis without installing the Fan module.
- Do not use the chassis without installing the Processor module.
- Do not leave unused slots open. Use the filler panels to cover the un-used slots.
- Do not block the front air intake.
- A minimum air flow clearance of 12 inches is required. 24 inches of air flow clearance is preferred at the rear of the chassis.
- Remove all external plastic protective film prior to chassis operation.
- Operator intervention may be required to power cycle the XGS12 chassis or restart a software program in the event the XGS12 chassis operation is upset or stopped by electrostatic discharge.

Figure : XGS12 Rack Screw Mount Locations



Un-pack and Mount the Chassis

1. Cut tape and open the carton.
2. Remove accessories box, top foam inserts, and side packing inserts.
3. Lift chassis out of the carton.
4. Remove power supply cover and keep it aside.
5. Remove the plastic wrapping.
6. Insert the lowermost screws on the rack.
7. Slide the chassis into the rack so that the lower screw notches of the chassis rests on the screws on the rack.
8. Insert the other screws and secure the chassis to the rack by tightening the screws.
9. Remove any and all plastic protective film from the chassis external surfaces.

Figure: XGS12 Mounted on Rack**WARNING**

The weight of the chassis components are as follows:

- Empty chassis with air baffles = 70 lbs
- Empty chassis without air baffles = 48 lbs
- 3 power cords = 6 lbs
- Power supply assembly = 29 lbs
- Fan Assembly = 10 lbs
- CPU card = 10 lbs

Do not attempt to lift the fully assembled chassis.

NOTE

- The chassis windows wallpaper is not displayed. So the credentials are required to log on.
- The chassis is CE marked and ULTM certified when using the 200-240 VAC power cords supplied with the chassis. However, these certifications for the chassis safety approvals are only valid when the unit is operating from all three 200-240 VAC main power supplies.

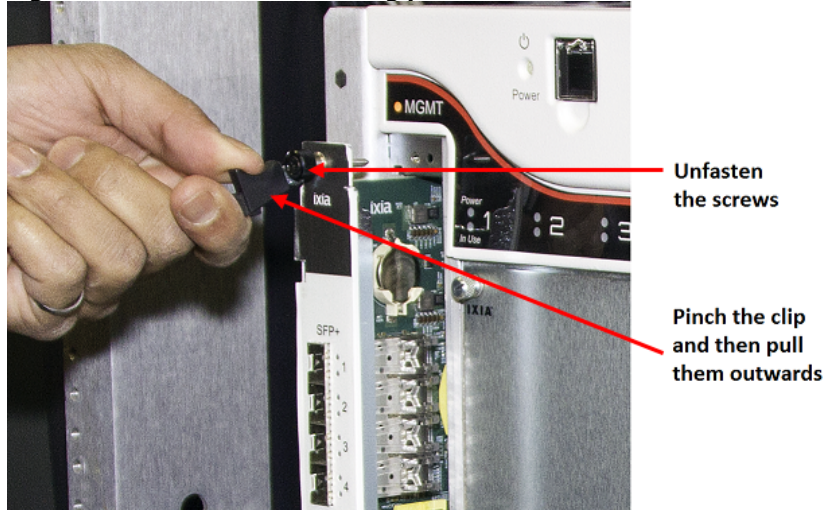
Refer to the Ixia Platform Reference Guide at: <https://www.ixiacom.com/profile/index.php> for more details.

Remove and Insert Processor Module

To remove the processor module:

1. Unfasten the screws.
2. Pinch the clips and then pull outwards.

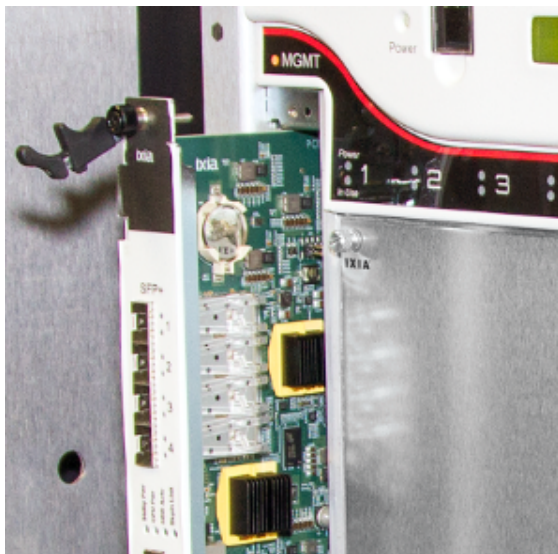
Figure: XGS12 Chassis removing processor module



To insert the processor module:

1. Slide the module into the slot.
2. Pinch on the clips and push them in.
3. Fasten the screws.

Figure : XGS12 Chassis inserting processor module



Remove and Insert Power Supply Module

The power supply module is accessible after removing the rear cover. For details see *Figure: XGS12 Chassis Back View*.

To remove the rear cover, unfasten the four screws around the cover and pull out the cover.

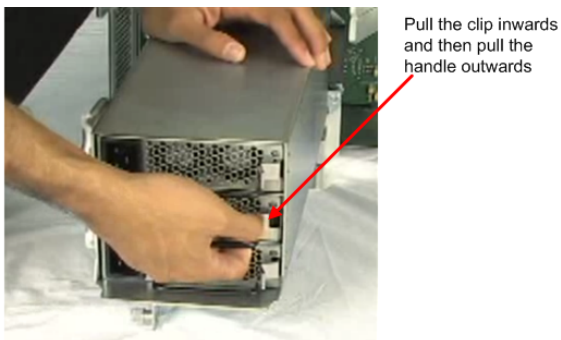
To remove the power supply module:

1. Loosen the thumbscrew in the upper left corner of the power supply module.
2. Pull the power clamp handles.
3. Hold the two handles provided on the power supply module and pull them.

To remove the individual power supplies,

1. Hold the handle on the power supply
2. Pull the clip inwards and then pull the handle out.

Figure : Individual Power Supply Removal



To insert the individual power supplies, slide the power supply in until you hear the clicking sound of the clip.

To insert the power supply module:

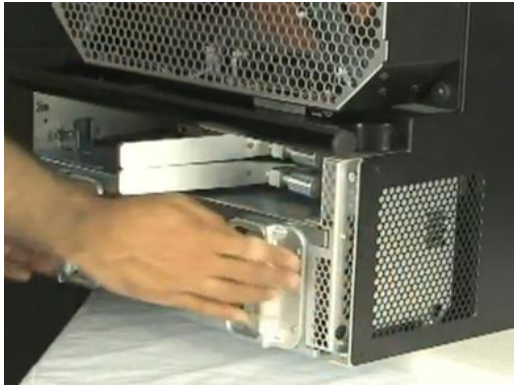
1. Place the power supply module on the bottom chassis rails. See *Figure : Inserting Power Supply Module*.

Figure : Inserting Power Supply Module



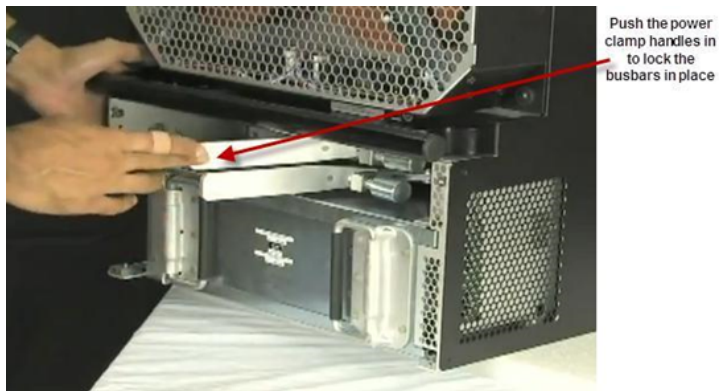
2. Push the power supply module inwards.

Figure : Inserting Power Supply Module



3. Push the power clamp handles in to lock the busbars in place.

Figure : Inserting Power Supply Module



4. Tighten the thumbscrew at the upper left corner of the power supply module.

Figure : Inserting Power Supply Module



5. Replace the rear cover and fasten it with the screws.

Figure :Inserting Power Supply Module

Remove and Insert Fan Module

The fan module is located on the rear side of the chassis. For details see *Figure : XGS12 Chassis Back View*.

To remove the fan module:

1. Unfasten the four screws that are present on the edges of the fan module.
2. Pull the module outwards.

Figure :Removing Fan Module

Unfasten the four screws on the edges of the fan module and then pull the module outwards to remove it

To install the fan module:

1. Push the rubber grommets over the metal standoff on the chassis.
2. Fasten the four screws tightly.

[This page intentionally left blank]

Log on to XGS12 Chassis

The Username for an XGS12 (Windows 7) remote desktop session is **ixia** and the password is the CPU module serial number found on the sticker located in front of the CPU module.

NOTE

The chassis windows wallpaper is not displayed. So the credentials are required to log on.
