

XGS Chassis Windows 10

Release 9.30

Notices

Copyright Notice

© Keysight Technologies 2019–2022

No part of this document may be reproduced in any form or by any means (including electronic storage and retrieval or translation into a foreign language) without prior agreement and written consent from Keysight Technologies, Inc. as governed by United States and international copyright laws.

Warranty

The material contained in this document is provided “as is,” and is subject to being changed, without notice, in future editions. Further, to the maximum extent permitted by applicable law, Keysight disclaims all warranties, either express or implied, with regard to this manual and any information contained herein, including but not limited to the implied warranties of merchantability and fitness for a particular purpose. Keysight shall not be liable for errors or for incidental or consequential damages in connection with the furnishing, use, or performance of this document or of any information contained herein. Should Keysight and the user have a separate written agreement with warranty terms covering the material in this document that conflict with these terms, the warranty terms in the separate agreement shall control.

Technology Licenses

The hardware and/or software described in this document are furnished under a license and may be used or copied only in accordance with the terms of such license.

U.S. Government Rights

The Software is “commercial computer software,” as defined by Federal Acquisition Regulation (“FAR”) 2.101. Pursuant to FAR 12.212 and 27.405-3 and Department of Defense FAR Supplement (“DFARS”) 227.7202, the U.S. government acquires commercial computer software

under the same terms by which the software is customarily provided to the public. Accordingly, Keysight provides the Software to U.S. government customers under its standard commercial license, which is embodied in its End User License Agreement (EULA), a copy of which can be found at

<http://www.keysight.com/find/sweula>.

The license set forth in the EULA represents the exclusive authority by which the U.S. government may use, modify, distribute, or disclose the Software. The EULA and the license set forth therein, does not require or permit, among other things, that Keysight: (1) Furnish technical information related to commercial computer software or commercial computer software documentation that is not customarily provided to the public; or (2) Relinquish to, or otherwise provide, the government rights in excess of these rights customarily provided to the public to use, modify, reproduce, release, perform, display, or disclose commercial computer software or commercial computer software documentation. No additional government requirements beyond those set forth in the EULA shall apply, except to the extent that those terms, rights, or licenses are explicitly required from all providers of commercial computer software pursuant to the FAR and the DFARS and are set forth specifically in writing elsewhere in the EULA. Keysight shall be under no obligation to update, revise or otherwise modify the Software. With respect to any technical data as defined by FAR 2.101, pursuant to FAR 12.211 and 27.404.2 and DFARS 227.7102, the U.S. government acquires no greater than Limited Rights as defined in FAR 27.401 or DFAR 227.7103-5 (c), as applicable in any technical data. 52.227-14 (June 1987) or DFAR 252.227-7015 (b)(2) (November 1995), as applicable in any technical data.

Contacting Us

Keysight headquarters

1400 Fountaingrove Parkway
Santa Rosa, CA 95403-1738
www.ixiacom.com/contact/info

Support

Global Support	+1 818 595 2599	support@ixiacom.com
<i>Regional and local support contacts:</i>		
APAC Support	+91 80 4939 6410	support@ixiacom.com
Australia	+61-742434942	support@ixiacom.com
EMEA Support	+40 21 301 5699	support-emea@ixiacom.com
Greater China Region	+400 898 0598	support-china@ixiacom.com
Hong Kong	+852-30084465	support@ixiacom.com
India Office	+91 80 4939 6410	support-india@ixiacom.com
Japan Head Office	+81 3 5326 1980	support-japan@ixiacom.com
Korea Office	+82 2 3461 0095	support-korea@ixiacom.com
Singapore Office	+65-6215-7700	support@ixiacom.com
Taiwan (local toll-free number)	00801856991	support@ixiacom.com

Documentation conventions

The following documentation conventions are used in this guide:

Describing interactions with the UI

You can interact with products by using different input methods: keyboard, mouse, touch, and more. So in most parts of the user documentation, generic verbs have been used that work with any input method. In cases where input-neutral verbs do not work, mouse-specific verbs are used as the first choice, followed by touch-specific verbs as the second choice.

See the following table for examples on how you can interpret the different input methods.

Input-neutral	Mouse	Touch
Select Modify .	Click Modify .	Tap Modify .
Select Accounts > Other accounts > Add an account .	Click Accounts > Other accounts > Add an account .	Tap Accounts > Other accounts > Add an account .
To open the document in Outline view, select View > Outline .	To open the document in Outline view, click View > Outline .	To open the document in Outline view, tap View > Outline .
Select Protocols .	Click the Protocols tab.	Tap Protocols .
-NA-	Double-click the Client wizard.	Double-tap the Client wizard.
Open the Packages context menu.	Right-click Packages to open the shortcut menu.	Long tap Packages to open the shortcut menu.

Deprecated words

The following words have been replaced with new words, considering the audience profile, our modern approach to voice and style, and our emphasis to use input-neutral terms that support all input methods.

Old usage...	New usage...
shortcut menu, right-click menu	context menu
click, right-click	select
drag and drop	drag

CONTENTS

Contacting Us	iii
Documentation conventions	iv
Conventions Used in this Guide	vi
Chapter 1 Purpose and Upgrade Process Outline	1
Chapter 2 Prerequisites	3
Chapter 3 Procedures	5
Windows 10 Upgrade Using Partition Replacement Procedure	5
Windows 10 First-Boot Procedure	8
Windows 10 License Activation	8
Installation of IxOS 9.00 or later	8
IxOS Windows 10 Upgrade License Activation	9
Chapter 4 Change password	11
Revision Policy	15
Confidentiality	15
INDEX	16

Conventions Used in this Guide

The following notational conventions are used in this guide.

Text is **bolded** to highlight important information.



The caution symbol denotes information that is of critical importance to the operation of the NTO.



The electrical hazard symbol indicates that the power supplies in your system may produce high voltages and energy hazards, which can cause bodily harm.



The hot surface symbol indicates that a surface or component is hot.



The electrostatic discharge (ESD) symbol indicates proper antistatic precautions should be taken to avoid damaging electronic equipment including printed circuit boards and components that are sensitive to static electricity.



The pointer symbol indicates that the information that follows provides helpful tips on how to use and configure the XGS chassis.



Note: Notes are written like this.

CHAPTER 1 Purpose and Upgrade Process Outline

This document describes the steps needed upgrade an Ixia XGS Chassis to Windows 10.

The first step in the upgrade process is to back up and replace the XGS Chassis Windows 7 OS partition with an Ixia XGS Chassis Windows 10 base image. The Data partition with Acronis backup images are not affected.

The following is an outline of the steps required to accomplish this upgrade task:

- Create an Acronis Recovery Image
- Replace the XGS Chassis Windows 7 partition with an XGS Chassis Windows 10 partition
- Windows 10 first-boot procedure
- Windows 10 Activation
- IxOS 9.00 Installation
- IxOS Windows 10 Upgrade License Activation



Note:

- Ensure this Upgrade Guide is available on another system or printed since it will not be available during portions of the upgrade process.
 - The upgrade requires IxOS 9.00 or later version.
-

This page intentionally left blank.

CHAPTER 2 Prerequisites

The following are the prerequisites for upgrading an Ixia XGS Chassis to Windows 10:

- Check to ensure you have the upgrade product 943-0014 IXIA IXOS AND WINDOWS 10 FIELD UPGRADE which includes the USB and Windows 10 license sticker.
- Check that the chassis to be upgraded is an XGS 940-0010, 940-0011 or 940-0110.



Note: The XGS-SD chassis has 2x USB-ports only.

- Ensure there is physical access to the chassis to be upgraded.
- Ensure that a monitor, keyboard, and mouse are available.
- Obtain the license activation key that is emailed as part of purchase of upgrade product 943-0014.
- Print or display these instructions on another system since the system being upgraded will not be available for document viewing.
- You need to de-register the current licenses before starting the Windows 10 upgrade. See the following [De-activate Ixia licenses](#) section.

De-activate Ixia licenses

Ixia Licensing Utility (ILU) manages the licenses issued by Ixia for its various products.

Using the ILU, deactivate all your licenses from the chassis and save your receipt file to store all activation codes. Move a copy of the receipt file to the Data partition.

See also *Deactivate Licenses* section of the *Ixia Licensing Management Guide*.

Note down local settings for reconfiguration after reimage

Disk reimage will delete all existing settings such as IP addresses and proxy servers. Note down the following to reconfigure after reimage:

- IP Address (or DHCP configuration)
- DNS address
- Any Proxy server settings
- Username and password.



Note: Always use username as 'ixia'. After the reimage, password will be set to the default, which is the 6-digit serial number of the controller.

- Any specific firewall or virus scanning software required by your IT department.

This page intentionally left blank.

CHAPTER 3 Procedures

The procedures for Windows 10 field upgrade are described in the following sections.



WARNING: IxOS version 9.00 or later is required to run Ixia hardware on Windows 10. If you still need to run earlier versions of software, do not proceed with the upgrade to Windows 10.

If at a later date you need to revert the chassis to Windows 7, you will need to contact Support to have a clean Windows 7 image installed on the chassis.

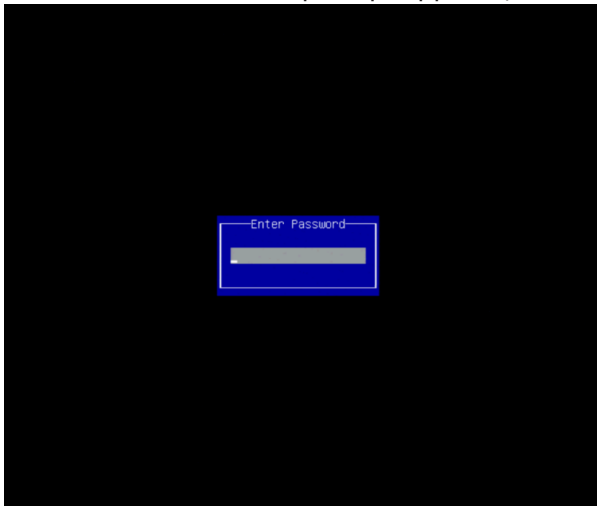
Windows 10 Upgrade Using Partition Replacement Procedure

The Windows 10 partition replacement procedure is outlined as follows:

1. Ensure all user data has been moved to the **Data** partition. All data in the “Windows7” partition will be overwritten.
2. During chassis boot, press **DEL** to enter Setup. (Repeatedly press DEL while the Ixia logo is shown.)



3. If an **Enter Password** prompt appears, leave the prompt blank and press **ENTER**.



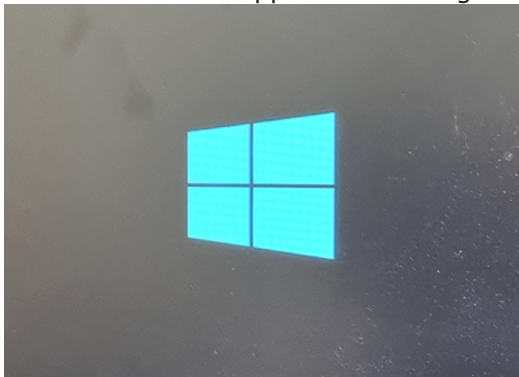
4. In the Aptio Setup Utility, navigate to the **Save & Exit** tab.

5. Under the **Boot Override** section, select the USB device ("SanDisk" in this example.)

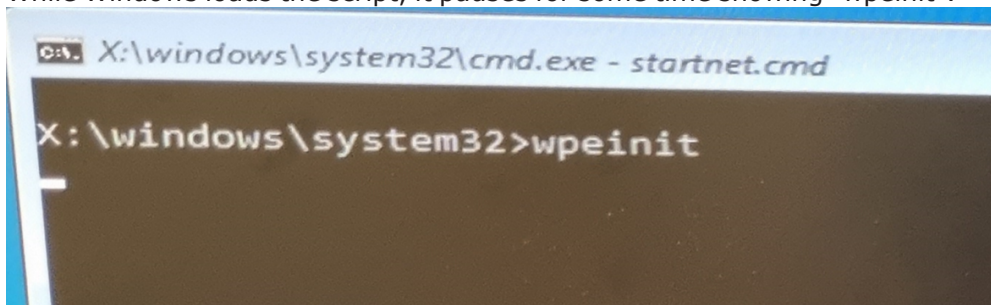


 **Note:** DO NOT select the **UEFI** boot option.

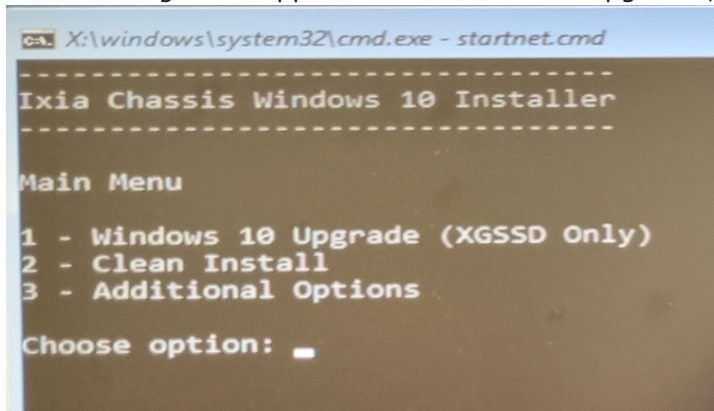
6. The Windows icon appears indicating that it is starting up.



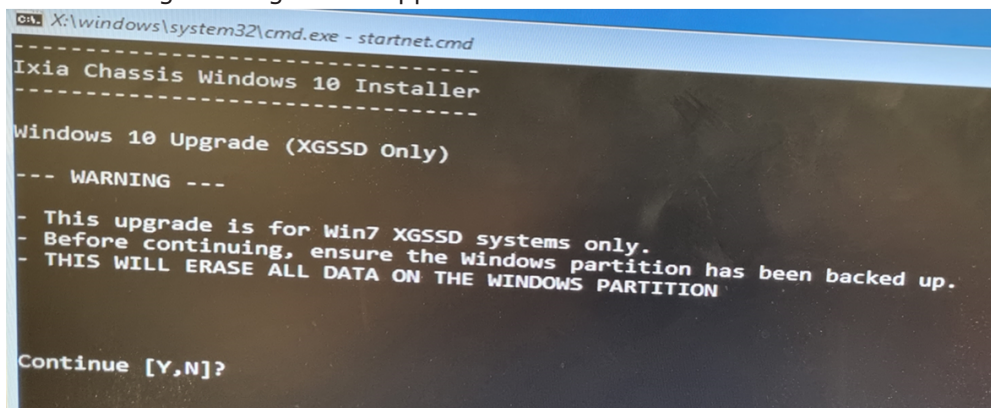
7. While Windows loads the script, it pauses for some time showing "wpeinit".



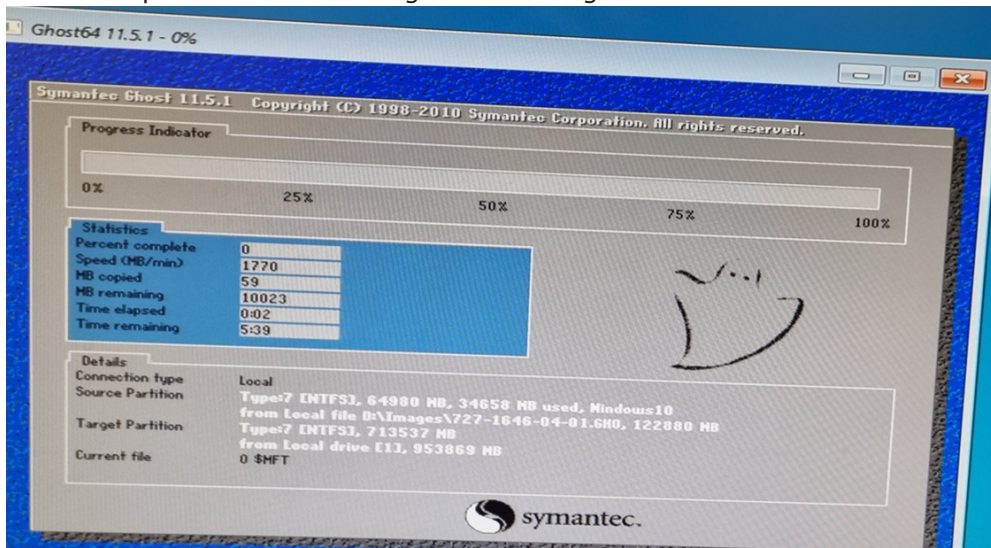
8. The following menu appears. For Windows 10 upgrades, type "1" on the keyboard.



9. The following warning screen appears. Click "Y" to continue.



10. The Ghost process starts loading the new image.



11. Wait for Ghost to complete rewriting the Windows partition. Once complete, it restarts automatically.

12. Ensure the system reboots into Windows 10.
13. The system may spend several minutes preparing the desktop, which may require several reboots. Ensure the Windows 10 login prompt appears.
14. Accept Microsoft EULA.



Note: When booting for the first time, the menu item in Windows Boot Manager may still say “Windows 7”. This does not indicate a failed upgrade and is corrected at the next step.

Windows 10 First-Boot Procedure

1. Wait until the account completes first-time configuration. The desktop should appear within several minutes.
2. When prompted, enter the 6-digit serial number of the Standard Performance Controller Module prefixed by XGSSD (example: XGSSD-xxxxxx), and press **Enter**. The serial number is printed on the label at the front of each controller.
3. The script makes the necessary changes and reboots.
4. After the computer reboots successfully, the chassis is ready for installation of Ixia software.



Note: After the system reboots, you can log in as the **ixia** user. The password will be the 6-digit serial number you entered earlier.

Windows 10 License Activation

1. Obtain the Windows 10 license key from the label in the upgrade kit.
2. Navigate to Start > Settings > Update & Security > Activation.
3. Select **Change product key**.
4. Enter the product key and then select **Next** to complete activation. This step requires connection to the internet to complete the Microsoft license activation.



Note: After you activate the license, do a power down, pull out the controller card, apply the license sticker, and insert the controller back.

For additional information, visit <https://support.microsoft.com/en-us/help/12440/windows-10-activate>.

Installation of IxOS 9.00 or later


Download a copy of IxOS installer (.exe file) from Ixia website.

IxOS installer installs IxExplorer and server components like Demo Server, TCL Server, and Hardware Manager.

Perform the following installation steps:

1. A dialogue box appears providing option for changing Installer Cache path where installer and helper files are stored. You should change it to a location which does not require administrative privileges. Select **Next** to proceed.

2. Installer starts unpacking files after which, setup progress window appears and package integrity check is performed. Wait for the check to complete.
3. After package integrity check passes, a separate welcome dialog box appears indicating that setup is ready to begin. Select **Next** to proceed with the installation. The setup wizard guides you through the next steps.

 **Note:** If you intend to use IxNetwork or IxLoad please download and install the chassis components of these products.

For downloading the installer files, go to <https://support.ixiacom.com/ixos-software-downloads-documentation>.

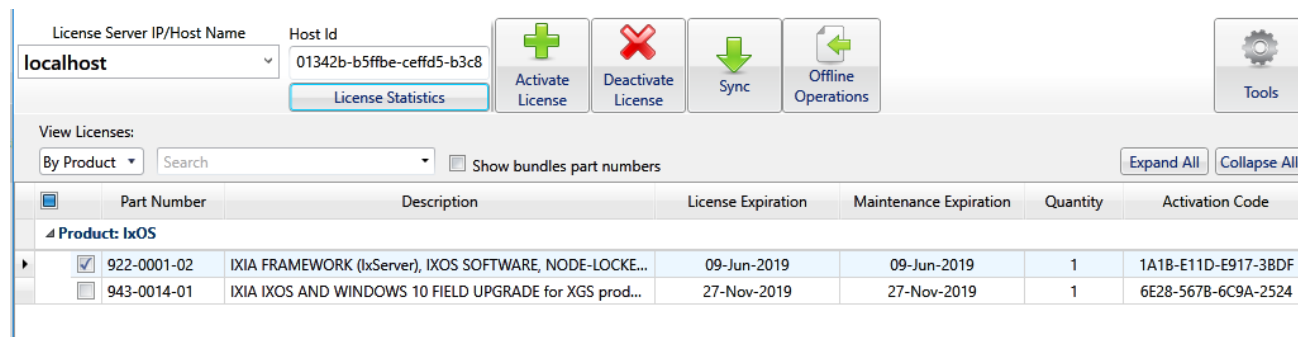
For details on Windows 10 installation procedure, see *IxOS Getting Started Guide* at <https://support.ixiacom.com/user-guide/ixos>.

IxOS Windows 10 Upgrade License Activation

Ixia Licensing Utility (ILU) manages the licenses issued by Ixia for its various products. To open the ILU application, select Start > All Programs > Ixia > LicenseServerPlus > Ixia Licensing Utility.

Perform the following steps:

1. Select **Activate** and add all the licenses (example for IxOS, IxNetwork, and IxLoad), that you deactivated prior to the Windows 10 upgrade. This license information should be in the receipt file you saved to the data partition before the Windows upgrade.
2. Additionally, add the new **Ixia IxOS and Windows 10 Field Upgrade** license that was emailed to you when this product was ordered.



The screenshot shows the Ixia Licensing Utility (ILU) interface. At the top, there are fields for 'License Server IP/Host Name' (set to localhost) and 'Host Id' (01342b-b5ffbe-ceffd5-b3c8). Below these are buttons for 'License Statistics', 'Activate License' (green plus icon), 'Deactivate License' (red X icon), 'Sync' (green down arrow icon), 'Offline Operations' (green left arrow icon), and 'Tools' (gear icon). Below the buttons is a 'View Licenses' section with a 'By Product' dropdown, a search bar, and a 'Show bundles part numbers' checkbox. There are 'Expand All' and 'Collapse All' buttons. Below this is a table of licenses.

	Part Number	Description	License Expiration	Maintenance Expiration	Quantity	Activation Code
Product: IxOS						
<input checked="" type="checkbox"/>	922-0001-02	IXIA FRAMEWORK (IxServer), IXOS SOFTWARE, NODE-LOCKE...	09-Jun-2019	09-Jun-2019	1	1A1B-E11D-E917-3BDF
<input type="checkbox"/>	943-0014-01	IXIA IXOS AND WINDOWS 10 FIELD UPGRADE for XGS prod...	27-Nov-2019	27-Nov-2019	1	6E28-567B-6C9A-2524

For details on activating licenses, see *Ixia Licensing Utility Guide*.

This page intentionally left blank.

CHAPTER 4 Change password

You can change password by one of the following methods:

1st method

Press Ctrl + Alt + Del and then select **Change password**

2nd method

Go to Start > Control Panel > User Accounts > Manage User Accounts > Change An Account > **Change password**

3rd method

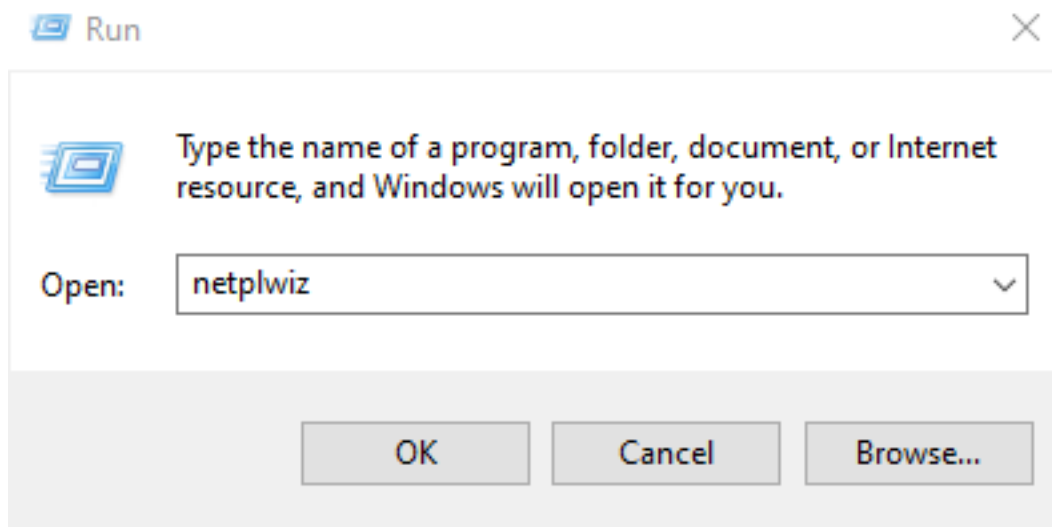
Start > Control Panel > View By > Large Icons > Administrative Tools > Computer Management > Local Users And Groups > Users. Select **Set Password** from the context menu.

4th method

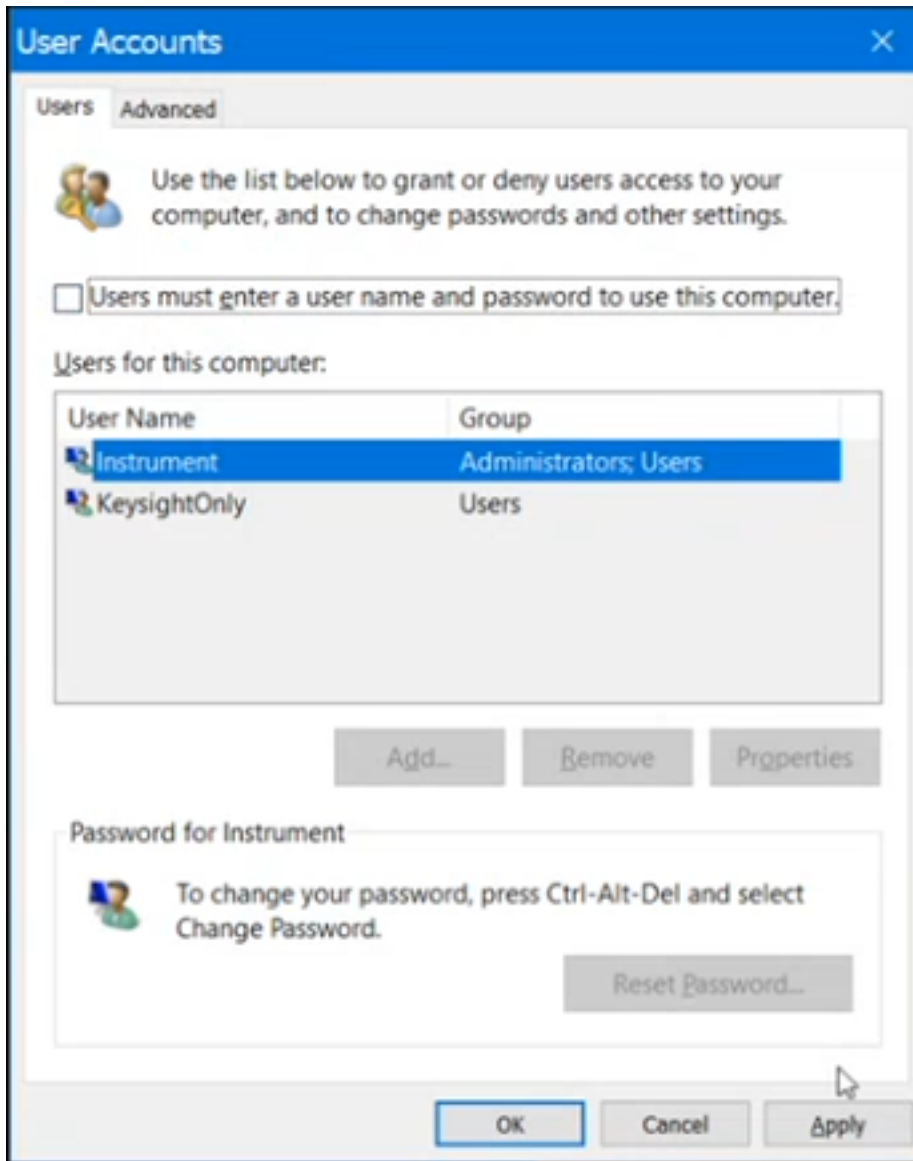
Start- > Settings > Accounts > Sign-in options. Select **Password** and select **Change**.

No further action is required if you change the password by 1st, 2nd, or 3rd method. If you change it by the 4th method, you must configure the new password in Microsoft's netplwiz as shown in the following steps:

1. Go to Run and type regedit.exe
2. Configure `AutoAdminLogon` to 1 in registry editor – HKEY_LOCAL_MACHINE\SOFTWARE\Microsoft\Windows NT\CurrentVersion\Winlogon
3. Go to Run and open **netplwiz**.



4. Clear **Users must enter a user name and password to use this computer** check box and then select **Apply**.



5. Type the default user name and the new password for automatic sign in process and select **OK**.



The image shows a Windows-style dialog box titled "Automatically sign in" with a close button (X) in the top right corner. Inside the dialog, there is a yellow key icon on the left. To the right of the icon, the text reads: "You can set up your computer so that users do not have to type a user name and password to sign in. To do this, specify a user that will be automatically signed in below:". Below this text, there are three input fields. The first is labeled "User name:" and contains the text "Instrument". The second is labeled "Password:" and is empty. The third is labeled "Confirm Password:" and is also empty. At the bottom right of the dialog, there are two buttons: "OK" and "Cancel".

Automatically sign in

You can set up your computer so that users do not have to type a user name and password to sign in. To do this, specify a user that will be automatically signed in below:

User name: Instrument

Password:

Confirm Password:

OK Cancel

6. Restart your computer to ensure the automatic sign in works seamlessly.

This page intentionally left blank.

Revision Policy

817-1019-01 Windows 10 Reimage from Windows 7, Revert Chassis

This document shall be controlled, approved, distributed, and revised electronically through Document Control.

Confidentiality

817-1019-01 Windows 10 Reimage from Windows 7, Revert Chassis

THIS DOCUMENT AND THE DATA DISCLOSED HEREIN OR HERewith IS PROPRIETARY AND IS NOT TO BE REPRODUCED, USED OR DISCLOSED IN WHOLE OR IN PART TO ANYONE WITHOUT THE WRITTEN PERMISSION OF IXIA COMMUNICATIONS. COPYRIGHT, © IXIA 2009

INDEX

A

activating license 8
activating license for windows 10 upgrade 9

C

customer assistance iii

D

deactivating Ixia licenses 3
documentation conventions iv

I

installing IxOS 8

K

keyboard interactions iv

M

mouse interactions iv

P

prerequisites 3
procedures 5
product support iii

S

support services iii

T

technical support iii

touch interactions iv

U

upgrading to Windows 10 5
using partition replacement 5

W

windows 10 first boot 8



© Keysight Technologies, 2019–2022

Keysight Technologies, Inc.
1400 Fountaingrove Parkway
Santa Rosa, CA 95403-1738
www.keysight.com