



Converting XGS2-SD and XGS12-SD chassis to Native IxOS

Version 1.0



Notices

Copyright Notice

© Keysight Technologies 2017–2018

No part of this document may be reproduced in any form or by any means (including electronic storage and retrieval or translation into a foreign language) without prior agreement and written consent from Keysight Technologies, Inc. as governed by United States and international copyright laws.

Warranty

The material contained in this document is provided “as is,” and is subject to being changed, without notice, in future editions. Further, to the maximum extent permitted by applicable law, Keysight disclaims all warranties, either express or implied, with regard to this manual and any information contained herein, including but not limited to the implied warranties of merchantability and fitness for a particular purpose. Keysight shall not be liable for errors or for incidental or consequential damages in connection with the furnishing, use, or performance of this document or of any information contained herein. Should Keysight and the user have a separate written agreement with warranty terms covering the material in this document that conflict with these terms, the warranty terms in the separate agreement shall control.

Technology Licenses

The hardware and/or software described in this document are furnished under a license and may be used or copied only in accordance with the terms of such license.

U.S. Government Rights

The Software is “commercial computer software,” as defined by Federal Acquisition Regulation (“FAR”) 2.101. Pursuant to FAR 12.212 and 27.405-3 and Department of Defense FAR Supplement (“DFARS”) 227.7202, the U.S. government

acquires commercial computer software under the same terms by which the software is customarily provided to the public. Accordingly, Keysight provides the Software to U.S. government customers under its standard commercial license, which is embodied in its End User License Agreement (EULA), a copy of which can be found at

<http://www.keysight.com/find/sweula> or <https://support.ixiacom.com/support-services/warranty-license-agreements>.

The license set forth in the EULA represents the exclusive authority by which the U.S. government may use, modify, distribute, or disclose the Software. The EULA and the license set forth therein, does not require or permit, among other things, that Keysight: (1) Furnish technical information related to commercial computer software or commercial computer software documentation that is not customarily provided to the public; or (2) Relinquish to, or otherwise provide, the government rights in excess of these rights customarily provided to the public to use, modify, reproduce, release, perform, display, or disclose commercial computer software or commercial computer software documentation. No additional government requirements beyond those set forth in the EULA shall apply, except to the extent that those terms, rights, or licenses are explicitly required from all providers of commercial computer software pursuant to the FAR and the DFARS and are set forth specifically in writing elsewhere in the EULA. Keysight shall be under no obligation to update, revise or otherwise modify the Software. With respect to any technical data as defined by FAR 2.101, pursuant to FAR 12.211 and 27.404.2 and DFARS 227.7102, the U.S. government acquires no greater than Limited Rights as defined in FAR 27.401 or DFAR 227.7103-5 (c), as applicable in any technical data. 52.227-14 (June 1987) or DFAR 252.227-7015 (b) (2) (November 1995), as applicable in any technical data.

Safety Information



Do not proceed beyond a hazard notice until the indicated conditions are fully understood and met.

A **CAUTION** notice denotes a hazardous situation that, if not avoided, could result in minor or moderate injury.

A **WARNING** notice denotes a hazardous situation that, if not avoided, could result in death or serious injury.

This page intentionally left blank.

About This Guide

This guide explains how to convert your existing XGS12-SD and XGS2-SD chassis running on Windows Operating System, to Native IxOS.

This conversion also involves moving the user data to the new Native IxOS.

Prerequisites

Before converting to Native IxOS, you need to do the following:

- [Deactivate Licenses from Windows Chassis](#)
- [Copy Useful Information](#)
- [Verify Load Modules](#)

Deactivate Licenses from Windows Chassis

Ixia Registration Utility (IRU) works with Registration Codes for products installed before 2016. If you have IRU licenses, perform the following steps:

If you have the new Ixia Licensing Utility (ILU) licenses installed, just perform step 3.

1. Connect to the chassis by opening a remote desktop connection to the chassis address.
2. Migrate IRU to ILU. You need to download and install the latest version of License Server from <http://support.ixiacom.com/support-overview/product-support/downloads-updates/versions/33011>.
ILU works with Activation Codes for products installed in 2016 and comes with IxOS 8.01 EA and later releases of IxOS.
For details, see the *IRU to ILU Migration* section of the *Ixia Licensing Management Guide* - <https://support.ixiacom.com/user-guide/license-management>.
3. Using the ILU, deactivate all your licenses from the Windows Chassis and save your receipt file to store all activation codes. Move a copy of this receipt file to an external location.
See also *Deactivate Licenses* section of the *Ixia Licensing Management Guide*.

NOTE **Note:** After you [convert the chassis to Native IxOS](#), activate the licenses again. See also [Activate Licenses](#).

Copy Useful Information

Any other useful information stored on the windows-based chassis becomes inaccessible when you convert to Native IxOS. So it should be copied externally.

NOTE **Note:** Reverting to Windows will install a factory default Windows operating system image on the chassis.

Verify Load Modules

Verify the list of Ixia Load Modules that are supported on the new Native IxOS by using the Ixia Product Compatibility Matrix.

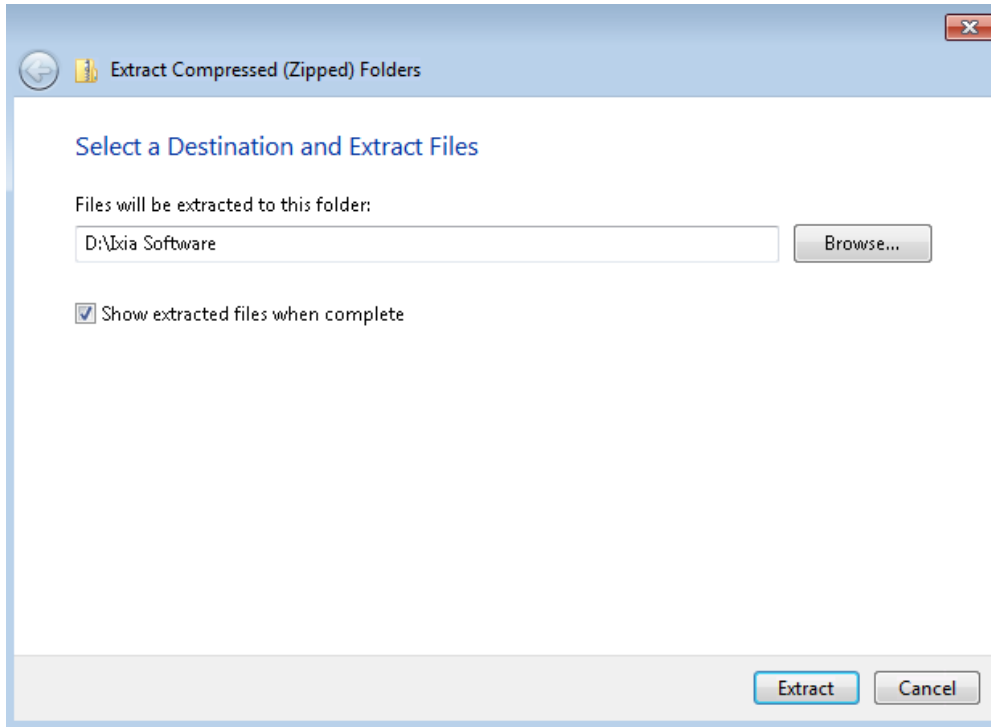
<https://support.ixiacom.com/support-overview/product-support/product-compatibility-matrix/>.

This page intentionally left blank.

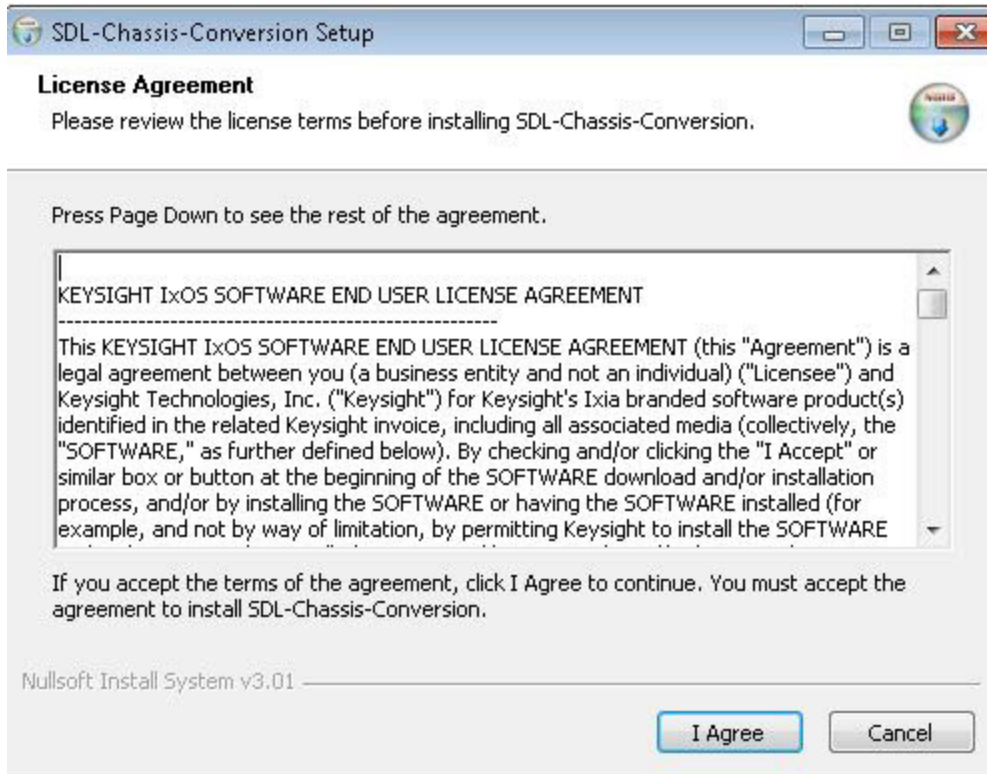
Convert Chassis to Native IxOS

To convert your existing XGS2-SD or XGS12-SD chassis to Native IxOS, do the following:

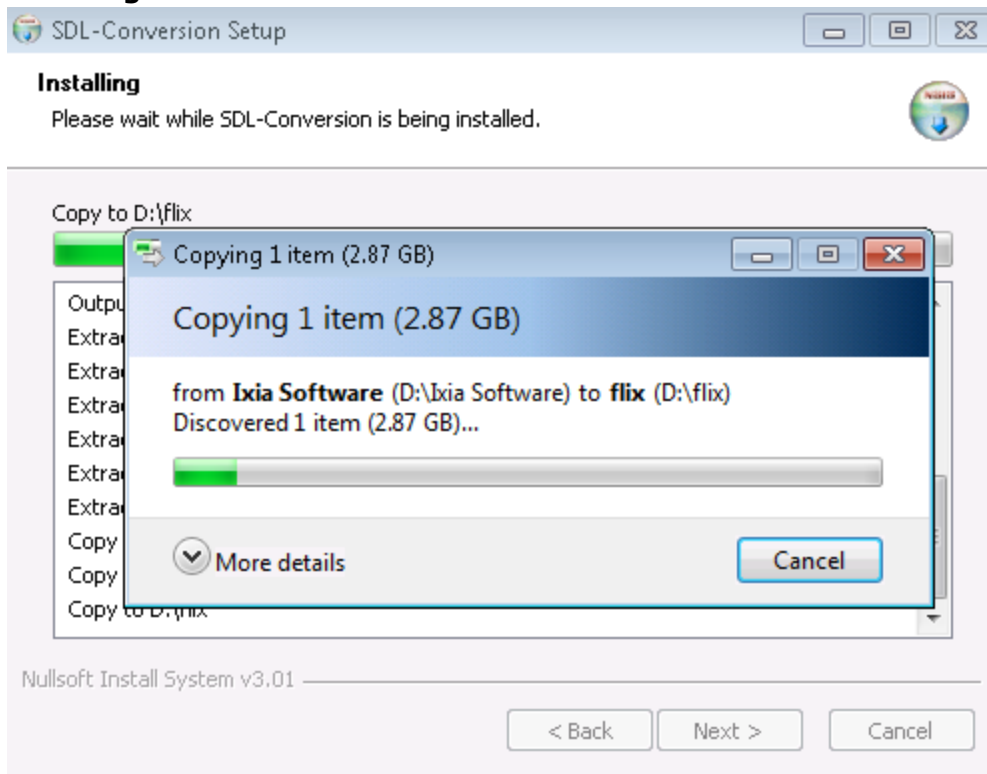
1. Download the zip archive from the Ixia website and copy it to the location **D:\Ixia Software** of the chassis.
2. Extract the archive in the same location.



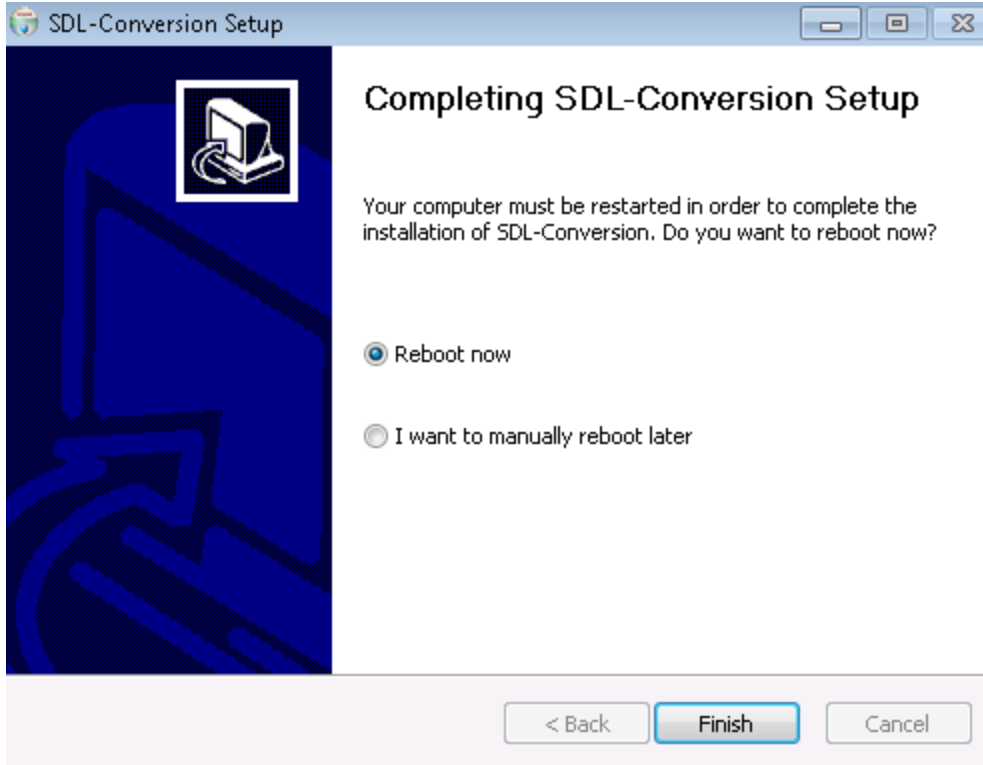
3. Run the installer file **SDL-Chassis-Conversion.exe** by double-clicking it. The **License Agreement** window will appear.



-
4. Click **I Agree**. The installation of the SDL-Conversion will start.



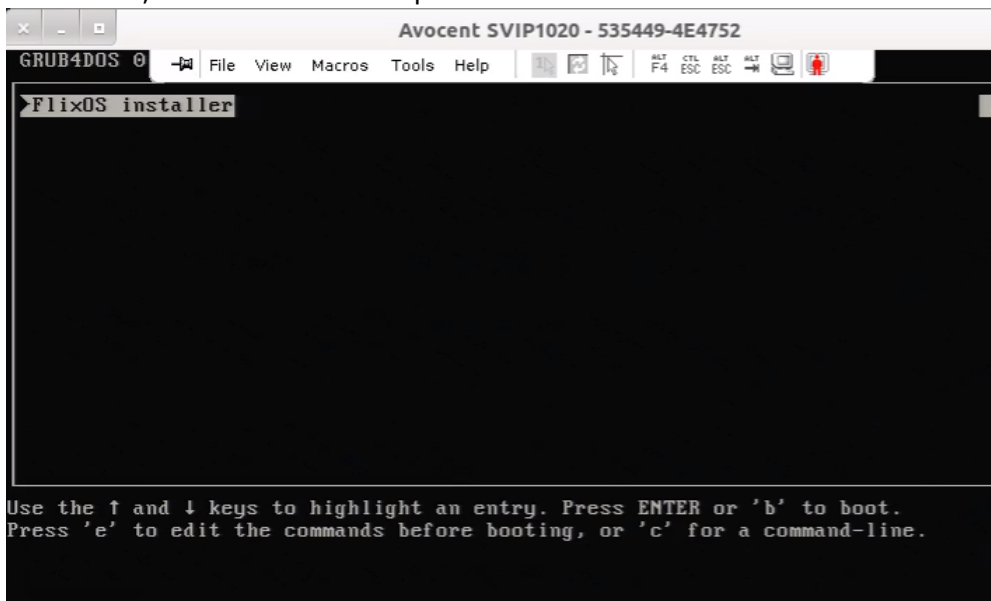
5. After the installation is complete, click **Reboot now**, and then click **Finish**. This reboots your computer.



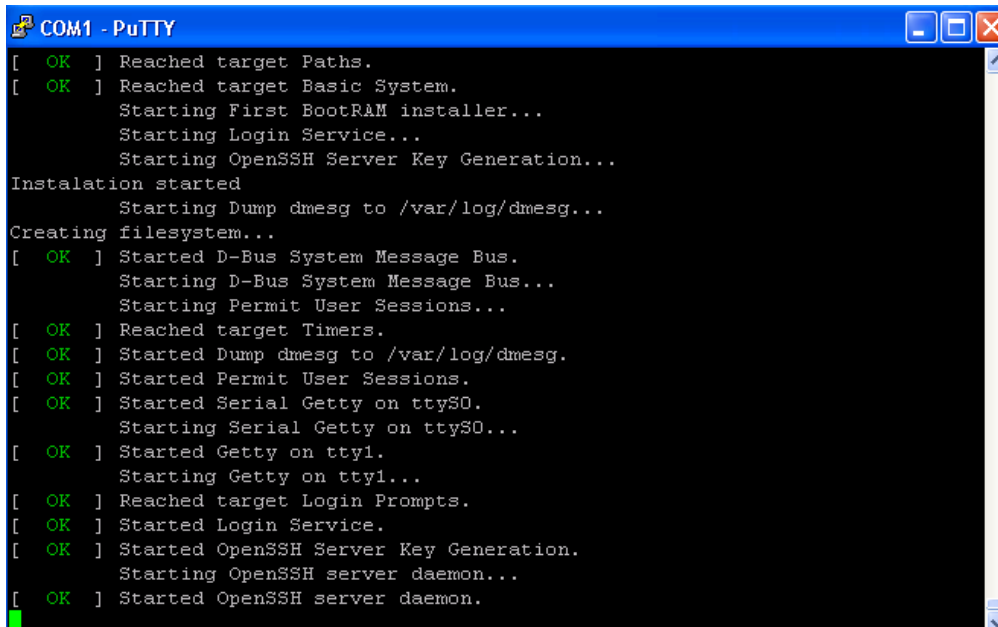
6. Connect to your chassis through your monitor and keyboard using the VGA and USB ports provided.

You can also connect via RS-232 serial port using speed=115200, word=8, parity=no.

The following output is seen only when you connect via VGA. For about 2-5 minutes, until step 7 is reached, there will be no output on serial console.



-
- The system will boot in RAM disk and start the conversion script. This process takes about 25 to 30 minutes.



```
COM1 - PuTTY
[ OK ] Reached target Paths.
[ OK ] Reached target Basic System.
Starting First BootRAM installer...
Starting Login Service...
Starting OpenSSH Server Key Generation...
Installation started
Starting Dump dmesg to /var/log/dmesg...
Creating filesystem...
[ OK ] Started D-Bus System Message Bus.
Starting D-Bus System Message Bus...
Starting Permit User Sessions...
[ OK ] Reached target Timers.
[ OK ] Started Dump dmesg to /var/log/dmesg.
[ OK ] Started Permit User Sessions.
[ OK ] Started Serial Getty on ttyS0.
Starting Serial Getty on ttyS0...
[ OK ] Started Getty on tty1.
Starting Getty on tty1...
[ OK ] Reached target Login Prompts.
[ OK ] Started Login Service.
[ OK ] Started OpenSSH Server Key Generation.
Starting OpenSSH server daemon...
[ OK ] Started OpenSSH server daemon.
```

- When the conversion is completed, the chassis reboots automatically.
- After the chassis reboots, using SSH, log in to Native IxOS chassis with username/password as admin/admin on port 8022. After logging in, you will see the progress and logs printed on screen.
- When logs stop printing, press any key to see the login prompt. You need to log in again and this time you should see a login banner.
You can also access the chassis using the web interface: https://<Chassis_IP>:443.
- Activate the licenses again. See also *Activate Licenses* section of the *Ixia Licensing Management Guide*.

Restore to Windows Chassis

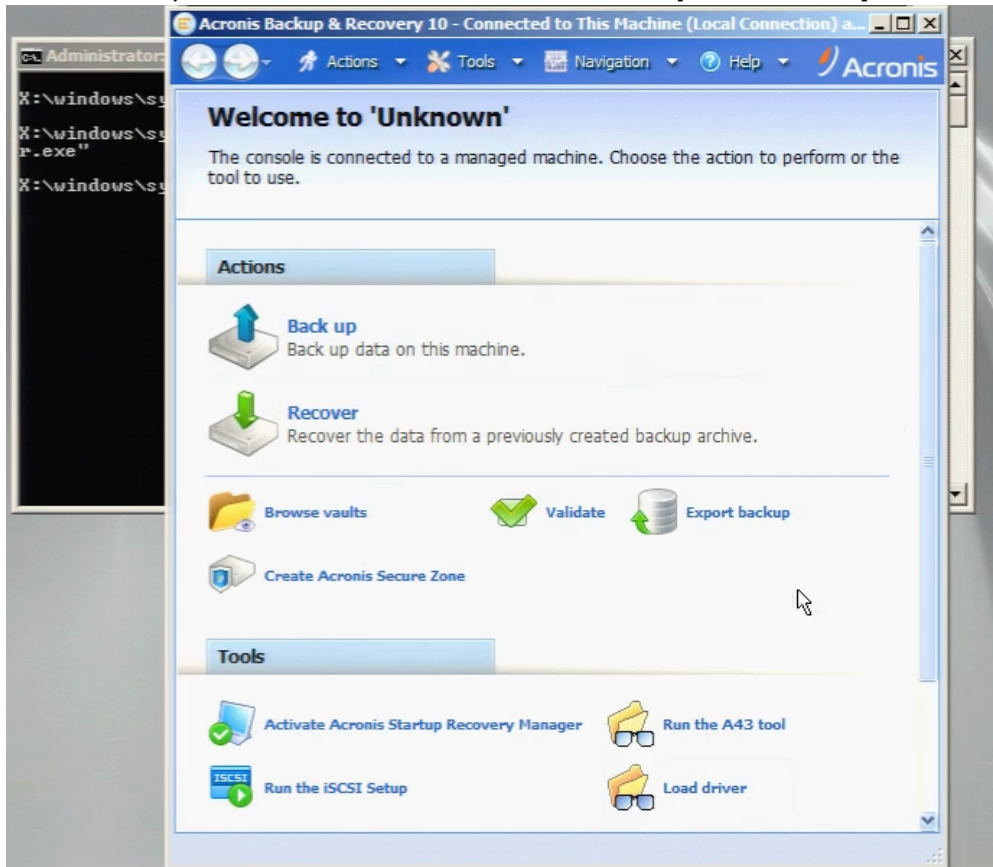
You can convert your chassis from Native IxOS back to Windows OS.

Using the ILU, deactivate all your licenses from the chassis running Native IxOS and save your receipt file to store all activation codes. Move a copy of this receipt file to an external location. After you have reverted your chassis back to Windows, you need to activate the licenses again.

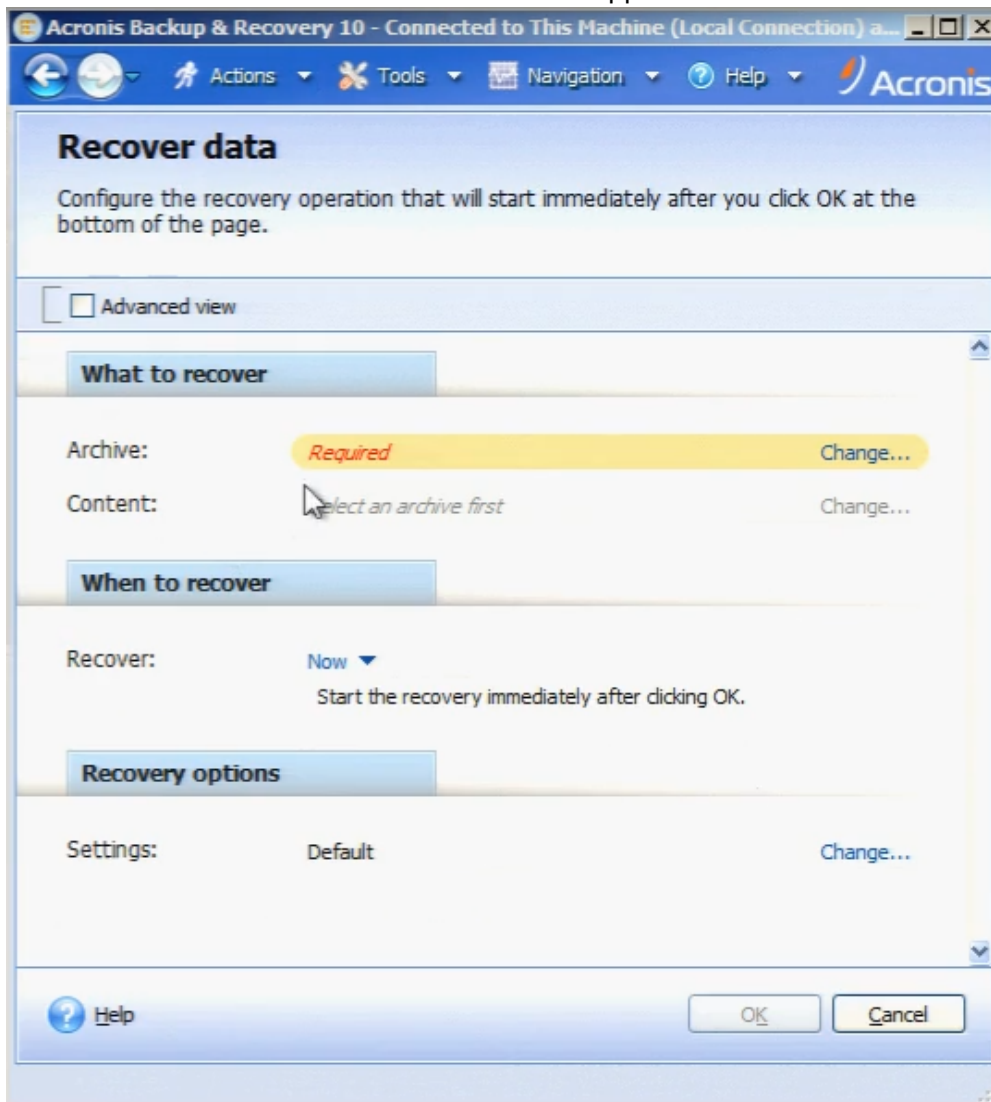
To convert your SDL chassis, do the following:

- Connect to the chassis by opening SSH client to the IP address of the chassis and port 8022, using the user *admin* and password *admin*.
- On the Command Line Interface, type the command `restore-to windows-chassis`. This closes the IxOS application, does a cleanup of the files that remain after the installation and shuts down XGS-SDL chassis.

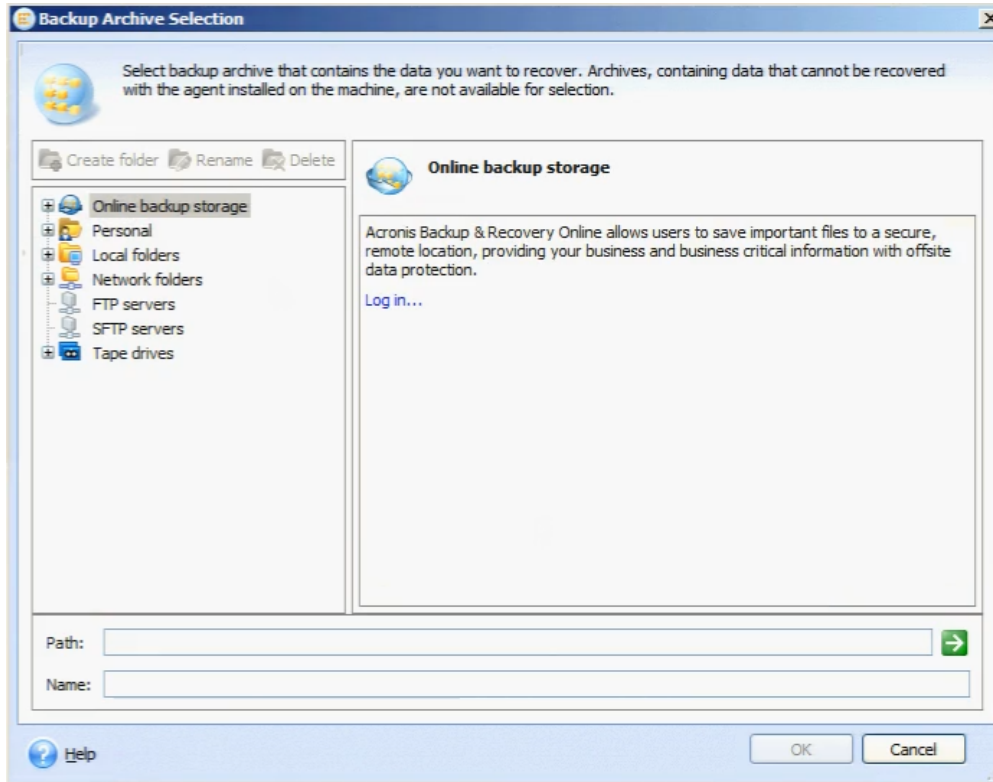
3. Reboot the system from KVM. The **Acronis Backup & Recovery** window appears.



4. Click **Recover**. The **Recover Data** window appears.

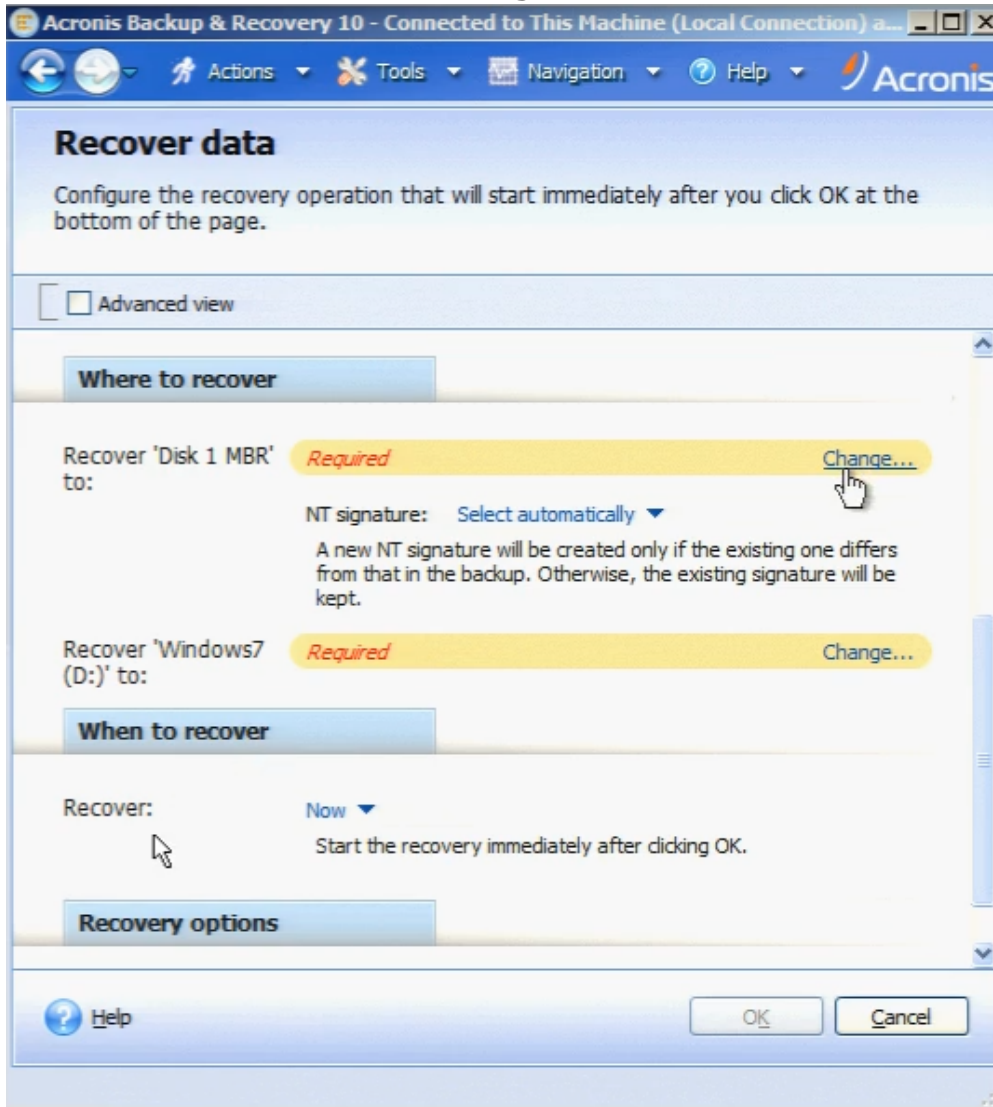


-
5. Under **What to recover**, click **Change**. The **Backup Archive Selection** window appears.

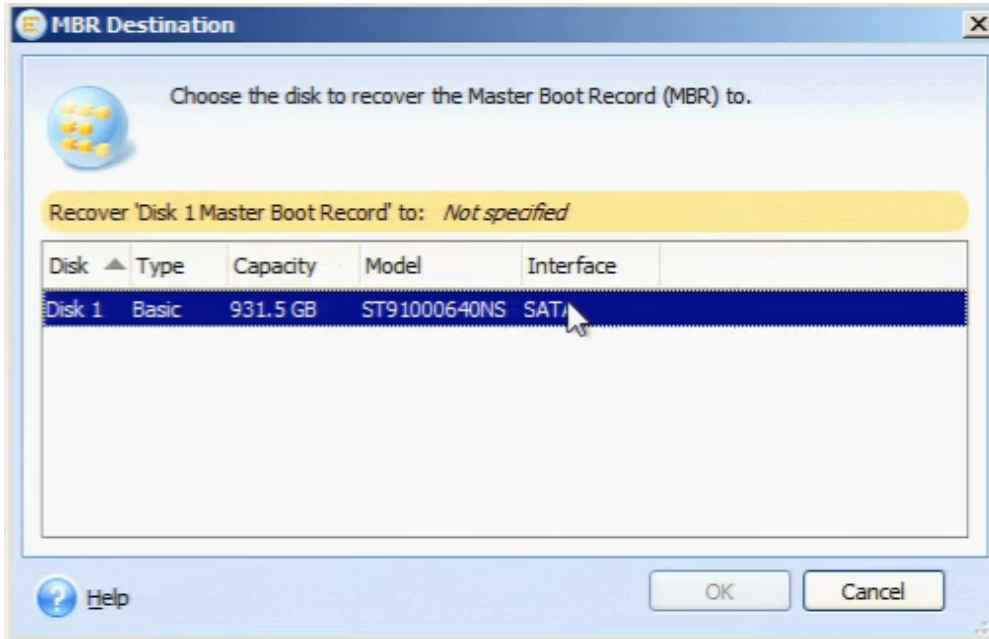


6. Browse to **Local Folders\Recovery** where a backup of the Windows Chassis is available. Since there can be multiple backups available, choose the one with the latest timestamp and click **OK**.

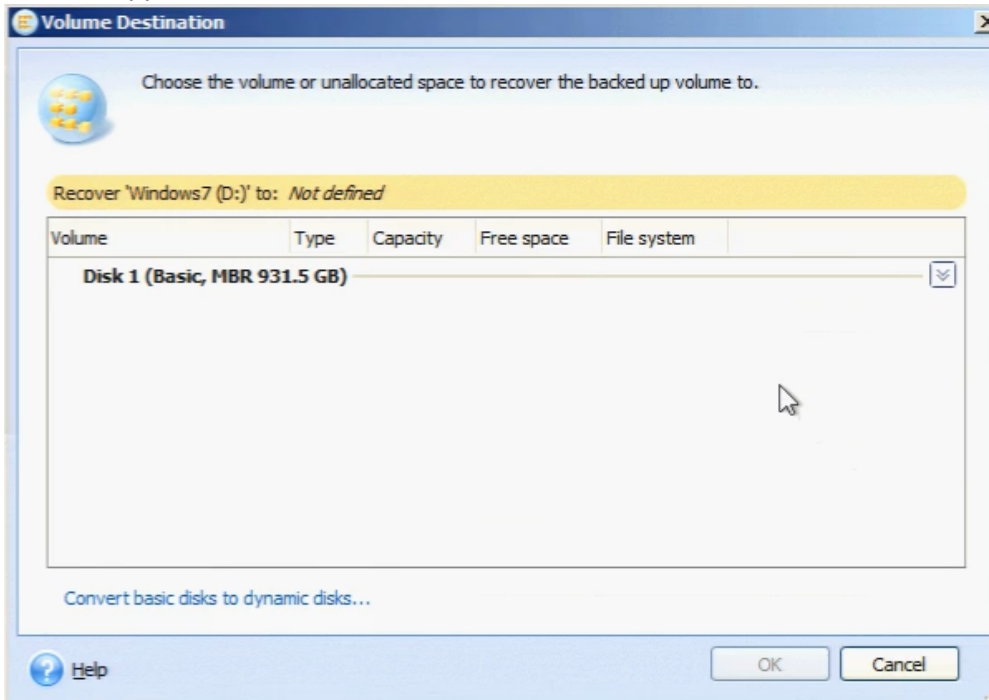
7. Under **Where to recover**, click **change for Recover Disk MBR**.



- In the **MBR Destination** window, select the disk to which the master boot record is to be recovered and then click **OK** to save changes and close the window.

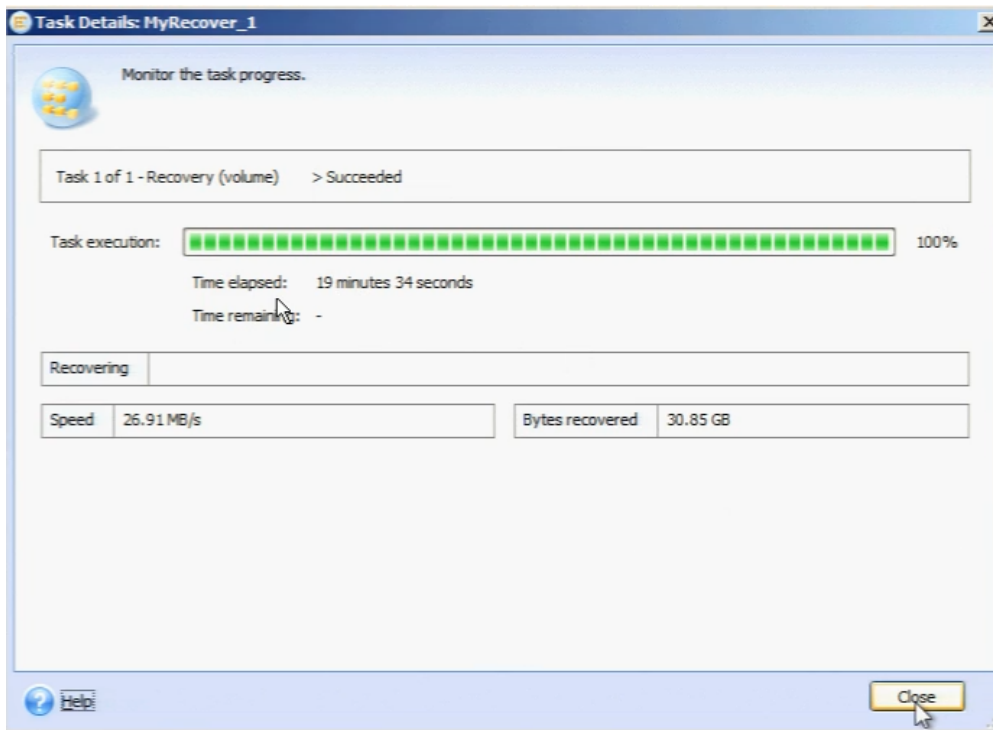


- Under **Where to recover**, click **change for Recover Windows**. The **Volume Destination** window appears.



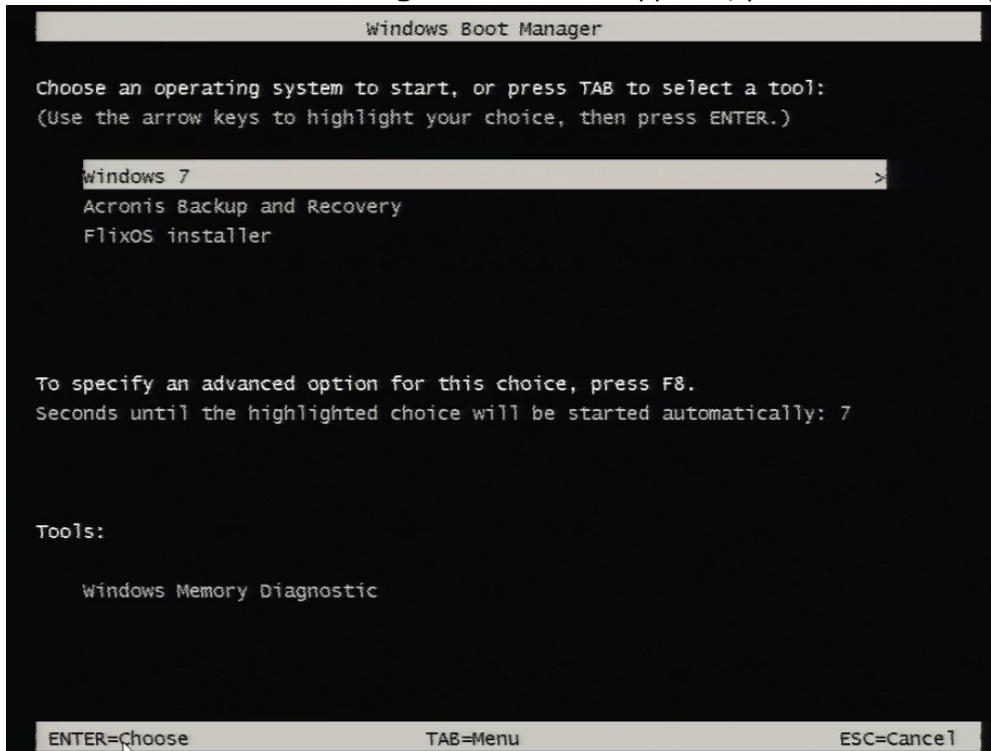
- Click on Expand Icon to see the available options. Select the unallocated space to which the backed up volume is to be recovered.
- Click **OK** to save changes and close the window.

12. In the **Recover Data** window, scroll down further and click **OK** to start the recovery process.
13. Wait for the task execution to reach 100 percent. Click **Close** after Recover status is set to **>Succeeded**.



14. In the **Recover Data** window, click **Actions**, and then click **Exit**.

-
15. In the **Windows Boot Manager** window that appears, press the Enter key to start Windows 7.



16. You need to reactivate the IxOS, IxNetwork and IxLoad licenses used on Native IxOS machine after the revert process.
The chassis is in brand new state. You can now proceed with installing Ixia applications that you need on this chassis.