



Converting XGS2-SD and XGS12-SD Chassis to Native IxOS

Release 9.00

Notices

Copyright Notice

© Keysight Technologies 2017–2019

No part of this document may be reproduced in any form or by any means (including electronic storage and retrieval or translation into a foreign language) without prior agreement and written consent from Keysight Technologies, Inc. as governed by United States and international copyright laws.

Warranty

The material contained in this document is provided “as is,” and is subject to being changed, without notice, in future editions. Further, to the maximum extent permitted by applicable law, Keysight disclaims all warranties, either express or implied, with regard to this manual and any information contained herein, including but not limited to the implied warranties of merchantability and fitness for a particular purpose. Keysight shall not be liable for errors or for incidental or consequential damages in connection with the furnishing, use, or performance of this document or of any information contained herein. Should Keysight and the user have a separate written agreement with warranty terms covering the material in this document that conflict with these terms, the warranty terms in the separate agreement shall control.

Technology Licenses

The hardware and/or software described in this document are furnished under a license and may be used or copied only in accordance with the terms of such license.

U.S. Government Rights

The Software is “commercial computer software,” as defined by Federal Acquisition Regulation (“FAR”) 2.101. Pursuant to FAR 12.212 and 27.405-3 and Department of Defense FAR Supplement (“DFARS”) 227.7202, the U.S. government

acquires commercial computer software under the same terms by which the software is customarily provided to the public. Accordingly, Keysight provides the Software to U.S. government customers under its standard commercial license, which is embodied in its End User License Agreement (EULA), a copy of which can be found at

<http://www.keysight.com/find/sweula> or <https://support.ixiacom.com/support-services/warranty-license-agreements>.

The license set forth in the EULA represents the exclusive authority by which the U.S. government may use, modify, distribute, or disclose the Software. The EULA and the license set forth therein, does not require or permit, among other things, that Keysight: (1) Furnish technical information related to commercial computer software or commercial computer software documentation that is not customarily provided to the public; or (2) Relinquish to, or otherwise provide, the government rights in excess of these rights customarily provided to the public to use, modify, reproduce, release, perform, display, or disclose commercial computer software or commercial computer software documentation. No additional government requirements beyond those set forth in the EULA shall apply, except to the extent that those terms, rights, or licenses are explicitly required from all providers of commercial computer software pursuant to the FAR and the DFARS and are set forth specifically in writing elsewhere in the EULA. Keysight shall be under no obligation to update, revise or otherwise modify the Software. With respect to any technical data as defined by FAR 2.101, pursuant to FAR 12.211 and 27.404.2 and DFARS 227.7102, the U.S. government acquires no greater than Limited Rights as defined in FAR 27.401 or DFAR 227.7103-5 (c), as applicable in any technical data. 52.227-14 (June 1987) or DFAR 252.227-7015 (b) (2) (November 1995), as applicable in any technical data.

Contact Us

Ixia headquarters

26601 West Agoura Road
Calabasas, California 91302
+1 877 367 4942 – Toll-free North America
+1 818 871 1800 – Outside North America
+1.818.871.1805 – Fax
www.ixiacom.com/contact/info

Support

Global Support	+1 818 595 2599	support@ixiacom.com
<i>Regional and local support contacts:</i>		
APAC Support	+91 80 4939 6410	support@ixiacom.com
Australia	+61-742434942	support@ixiacom.com
EMEA Support	+40 21 301 5699	support-emea@ixiacom.com
Greater China Region	+400 898 0598	support-china@ixiacom.com
Hong Kong	+852-30084465	support@ixiacom.com
India Office	+91 80 4939 6410	support-india@ixiacom.com
Japan Head Office	+81 3 5326 1980	support-japan@ixiacom.com
Korea Office	+82 2 3461 0095	support-korea@ixiacom.com
Singapore Office	+65-6215-7700	support@ixiacom.com
Taiwan (local toll-free number)	00801856991	support@ixiacom.com

Documentation conventions

The following documentation conventions are used in this guide:

Describing interactions with the UI

You can interact with products by using different input methods: keyboard, mouse, touch, and more. So in most parts of the user documentation, generic verbs have been used that work with any input method. In cases where input-neutral verbs do not work, mouse-specific verbs are used as the first choice, followed by touch-specific verbs as the second choice.

See the following table for examples on how you can interpret the different input methods.

Input-neutral	Mouse	Touch
Select Modify .	Click Modify .	Tap Modify .
Select Accounts > Other accounts > Add an account .	Click Accounts > Other accounts > Add an account .	Tap Accounts > Other accounts > Add an account .
To open the document in Outline view, select View > Outline .	To open the document in Outline view, click View > Outline .	To open the document in Outline view, tap View > Outline .
Select Protocols .	Click the Protocols tab.	Tap Protocols .
-NA-	Double-click the Client wizard.	Double-tap the Client wizard.
Open the Packages context menu.	Right-click Packages to open the shortcut menu.	Long tap Packages to open the shortcut menu.

Deprecated words

The following words have been replaced with new words, considering the audience profile, our modern approach to voice and style, and our emphasis to use input-neutral terms that support all input methods.

Old usage...	New usage...
shortcut menu, right-click menu	context menu
click, right-click	select
drag and drop	drag

CONTENTS

Contact Us	iii
Documentation conventions	iv
About This Guide	i
Chapter 1 Prerequisites	1
Chapter 2 Convert Chassis to Native IxOS	3
Chapter 3 Restore to Windows Chassis	9
INDEX	17

About This Guide

This guide explains how to convert your existing XGS12-SD and XGS2-SD chassis running on Windows Operating System, to Native IxOS.

This conversion also involves moving the user data to the new Native IxOS.

This page intentionally left blank.

CHAPTER 1 Prerequisites

Before converting to Native IxOS, you need to do the following:

- [Deactivate Licenses from Windows Chassis](#)
- [Copy Useful Information](#)
- [Verify Load Modules](#)

Deactivate Licenses from Windows Chassis

Ixia Registration Utility (IRU) works with Registration Codes for products installed before 2016. If you have IRU licenses, perform the following steps:


If you have the new Ixia Licensing Utility (ILU) licenses installed, just perform step 3.

1. Connect to the chassis by opening a remote desktop connection to the chassis address.
2. Migrate IRU to ILU. You need to download and install the latest version of License Server from <http://support.ixiacom.com/support-overview/product-support/downloads-updates/versions/33011>.
ILU works with Activation Codes for products installed in 2016 and comes with IxOS 8.01 EA and later releases of IxOS.
For details, see the *IRU to ILU Migration* section of the *Ixia Licensing Management Guide* - <https://support.ixiacom.com/user-guide/license-management>.
3. Using the ILU, deactivate all your licenses from the Windows Chassis and save your receipt file to store all activation codes. Move a copy of this receipt file to an external location.
See also *Deactivate Licenses* section of the *Ixia Licensing Management Guide*.

 **Note:** After you [convert the chassis to Native IxOS](#), activate the licenses again. See also [Activate Licenses](#).

Copy Useful Information

Any other useful information stored on the windows-based chassis becomes inaccessible when you convert to Native IxOS. So it should be copied externally.

 **Note:** Reverting to Windows will install a factory default Windows operating system image on the chassis.

Verify Load Modules

Verify the list of Ixia Load Modules that are supported on the new Native IxOS by using the Ixia Product Compatibility Matrix.

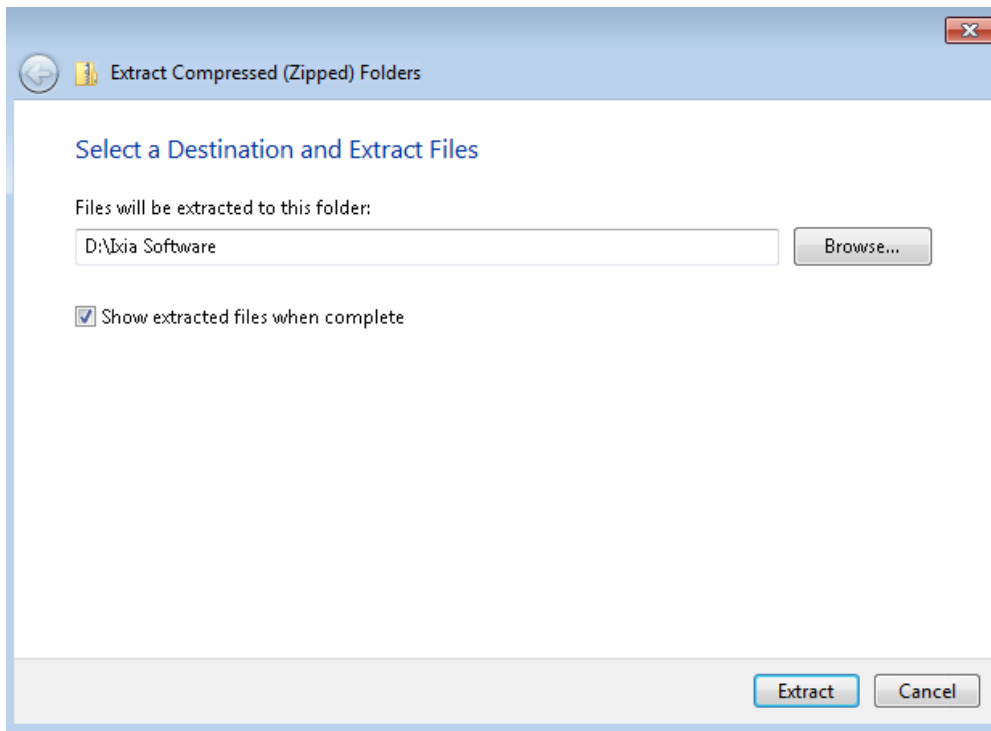
<https://support.ixiacom.com/support-overview/product-support/product-compatibility-matrix/>.

This page intentionally left blank.

CHAPTER 2 Convert Chassis to Native IxOS

To convert your existing XGS2-SD or XGS12-SD chassis to Native IxOS, do the following:

1. Download the **SD_Installer_Native-IxOS-Conversion-x.x.x.x-x.x.x.x.sh.zip** archive from the Ixia website and copy it to the location **D:\Ixia Software** of the chassis.
2. Extract the archive in the same location.



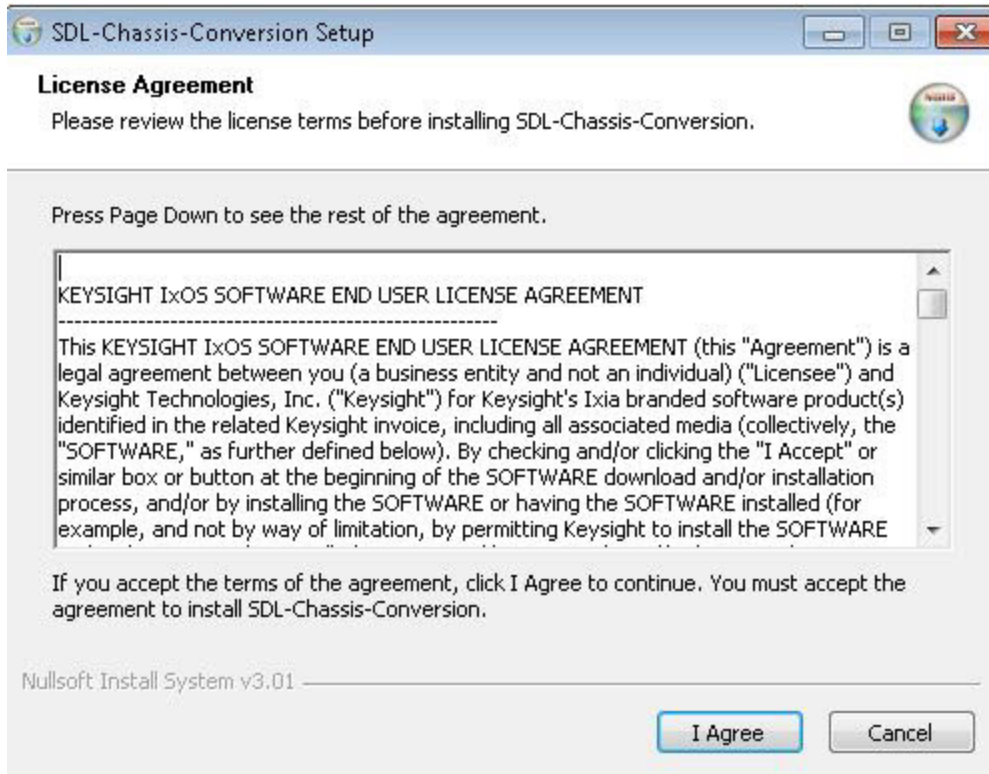
Note:

On Windows 7, due to a Microsoft known issue, the conversion script cannot be extracted successfully with Microsoft native utility.

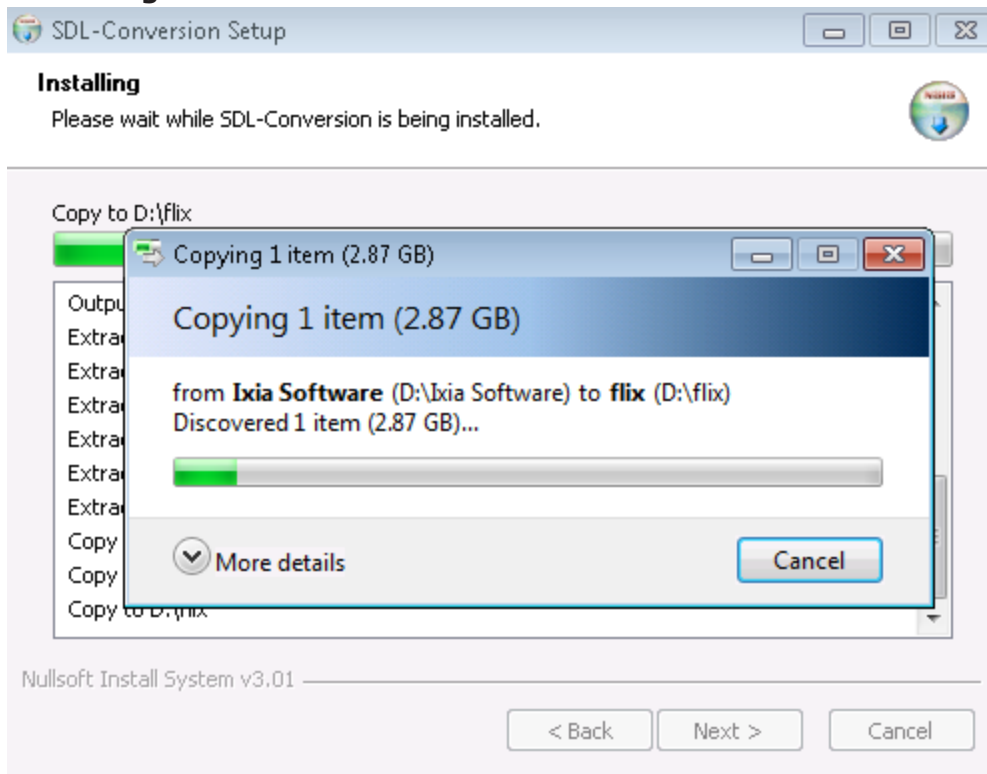
For more information, see: <https://answers.microsoft.com/en-us/windows/forum/all/windows-extracts-a-3gb-file-to-734-million-gb/8194bc2a-b19b-4e33-ae8e-ed4a293092e9>

You need to extract the .zip file on Windows 10, or use a third party tool.

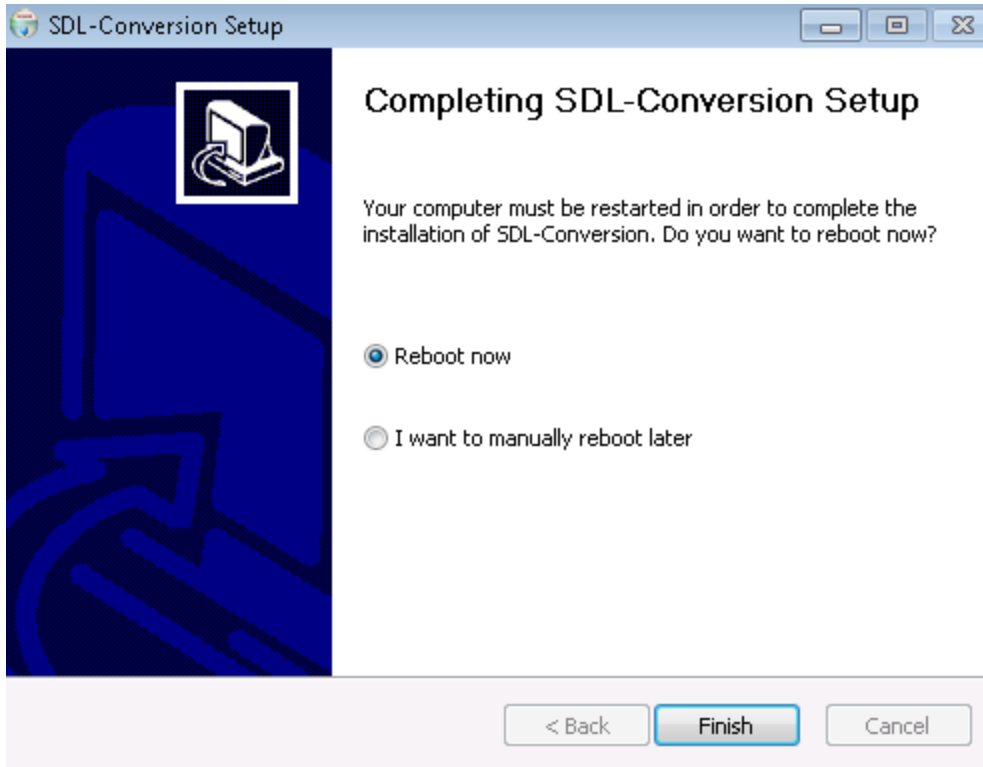
3. Run the installer file **SDL-Chassis-Conversion.exe** by double-clicking it. The **License Agreement** window appears.



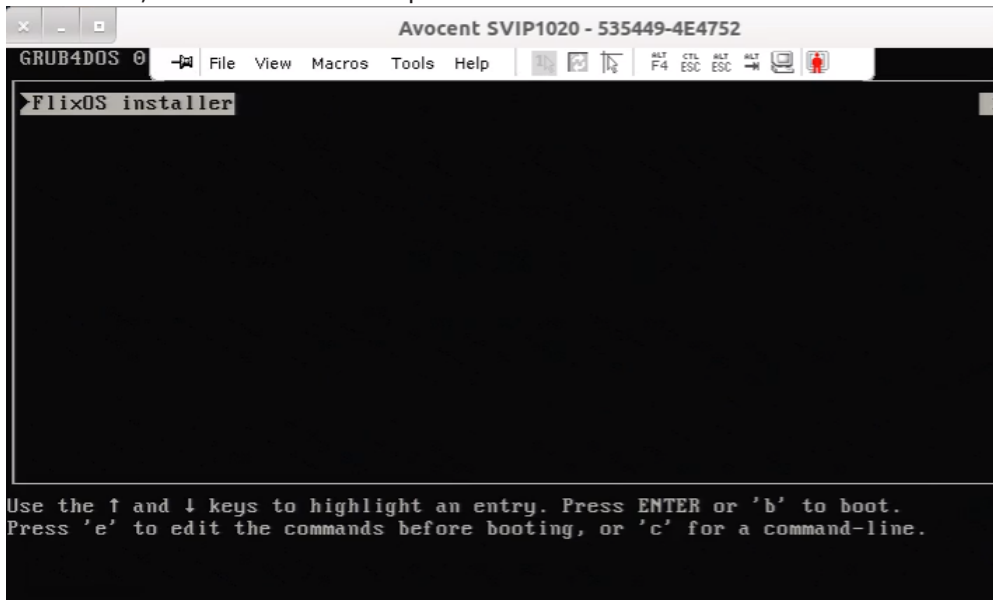
4. Select **I Agree**. The installation of the SDL-Conversion starts.



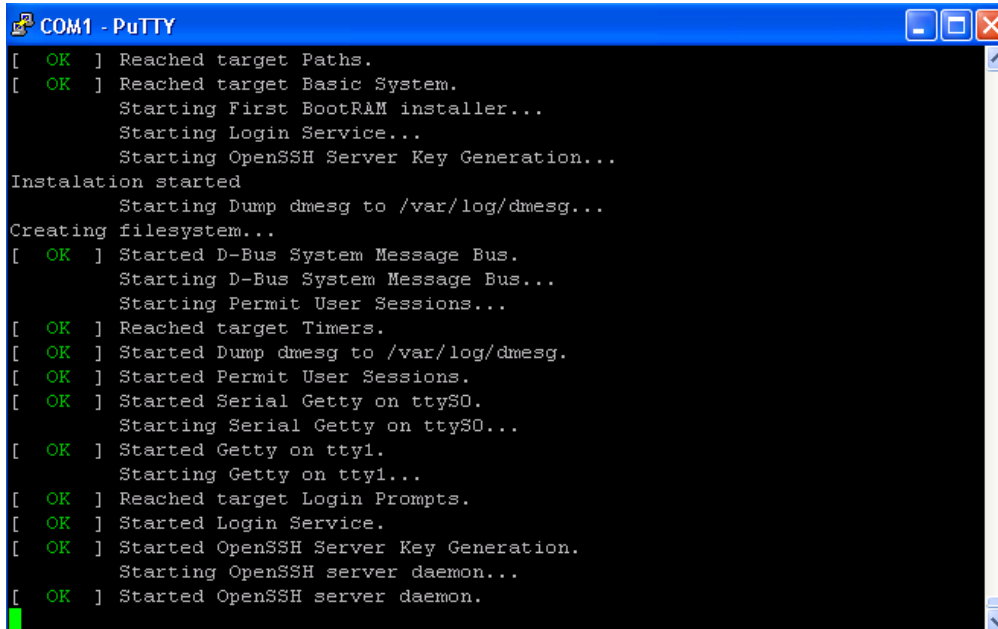
5. After the installation is complete, select **Reboot now**, and then select **Finish**. This reboots your computer.



6. Connect to your chassis through your monitor and keyboard using the VGA and USB ports provided.
You can also connect via RS-232 serial port using speed=115200, word=8, parity=no.
The following output is seen only when you connect via VGA. For about 2-5 minutes, until step 7 is reached, there will be no output on serial console.



7. The system will boot in RAM disk and start the conversion script. This process takes about 25 to 30 minutes.

A screenshot of a PuTTY terminal window titled "COM1 - PuTTY". The terminal displays the output of a system boot and conversion script. The text is as follows:

```
[ OK ] Reached target Paths.
[ OK ] Reached target Basic System.
Starting First BootRAM installer...
Starting Login Service...
Starting OpenSSH Server Key Generation...
Installation started
Starting Dump dmesg to /var/log/dmesg...
Creating filesystem...
[ OK ] Started D-Bus System Message Bus.
Starting D-Bus System Message Bus...
Starting Permit User Sessions...
[ OK ] Reached target Timers.
[ OK ] Started Dump dmesg to /var/log/dmesg.
[ OK ] Started Permit User Sessions.
[ OK ] Started Serial Getty on ttyS0.
Starting Serial Getty on ttyS0...
[ OK ] Started Getty on tty1.
Starting Getty on tty1...
[ OK ] Reached target Login Prompts.
[ OK ] Started Login Service.
[ OK ] Started OpenSSH Server Key Generation.
Starting OpenSSH server daemon...
[ OK ] Started OpenSSH server daemon.
```

8. When the conversion is completed, the chassis reboots automatically.
9. After the chassis reboots, using SSH, log in to Native IxOS chassis with username/password as admin/admin on port 8022. After logging in, you will see the progress and logs printed on screen.
10. When logs stop printing, press any key to see the login prompt. You need to log in again and this time you should see a login banner.
You can also access the chassis using the web interface: https://<Chassis_IP>:443.
11. Activate the licenses again. See also *Activate Licenses* section of the *Ixia Licensing Management Guide*.

This page intentionally left blank.

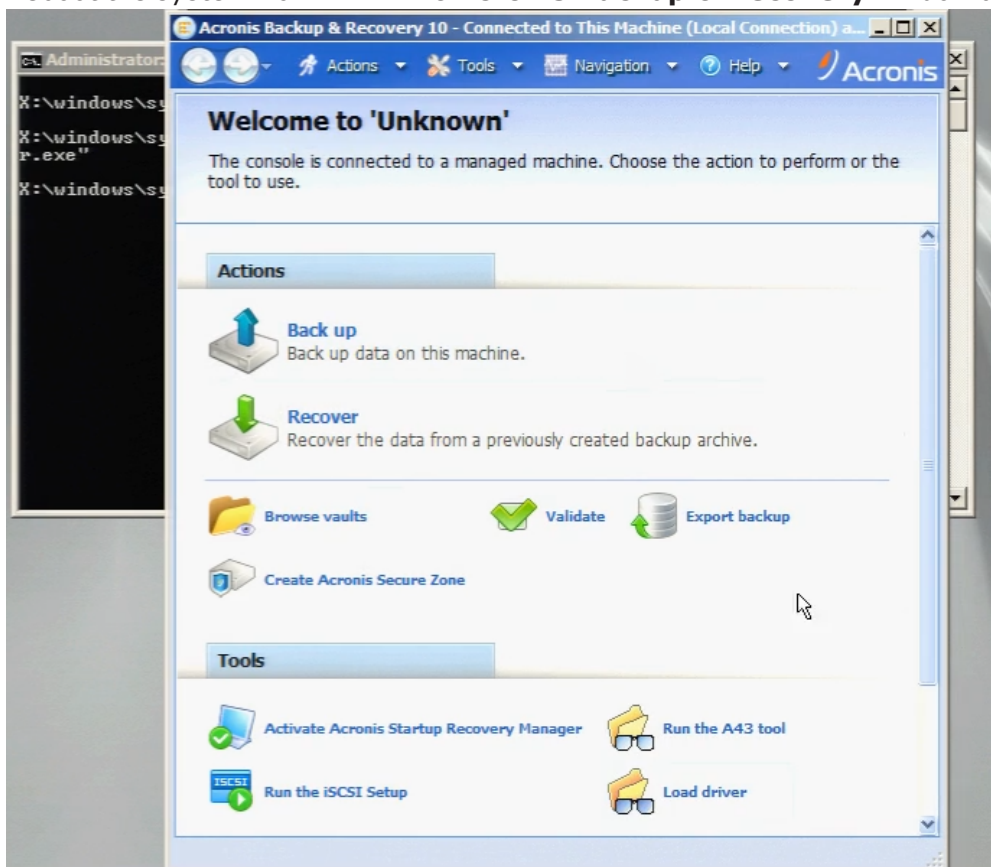
CHAPTER 3 Restore to Windows Chassis

You can convert your chassis from Native IxOS back to Windows OS.

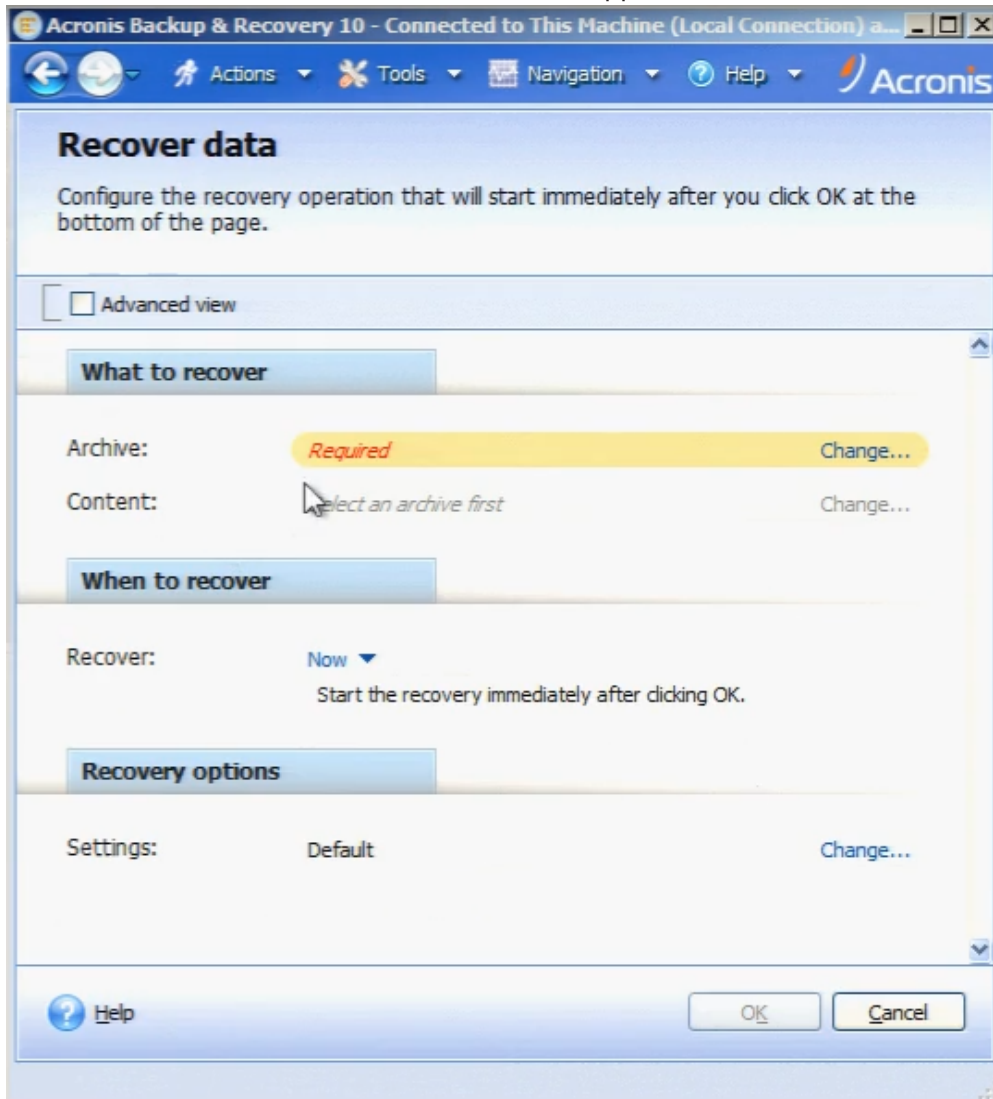
Using the ILU, deactivate all your licenses from the chassis running Native IxOS and save your receipt file to store all activation codes. Move a copy of this receipt file to an external location. After you have reverted your chassis back to Windows, you need to activate the licenses again.

To convert your SDL chassis, do the following:

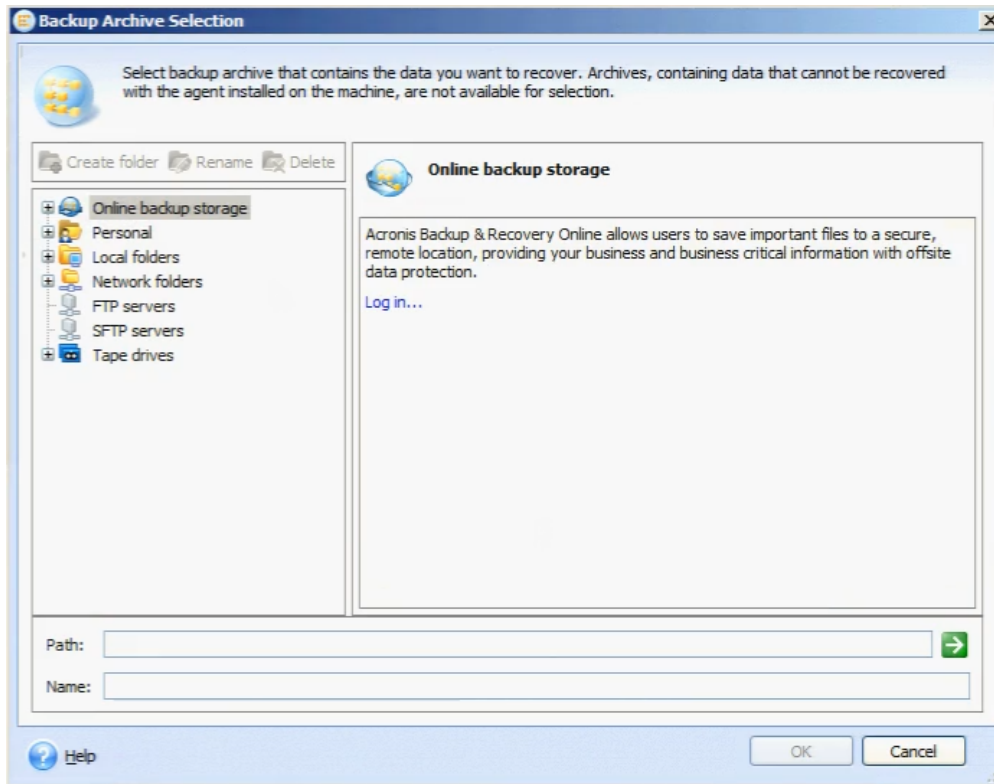
1. Connect to the chassis by opening SSH client to the IP address of the chassis and port 8022, using the user *admin* and password *admin*.
2. On the Command Line Interface, type the command `restore-to windows-chassis`. This closes the IxOS application, does a cleanup of the files that remain after the installation and shuts down XGS-SDL chassis.
3. Reboot the system from KVM. The **Acronis Backup & Recovery** window appears.



4. Click **Recover**. The **Recover Data** window appears.

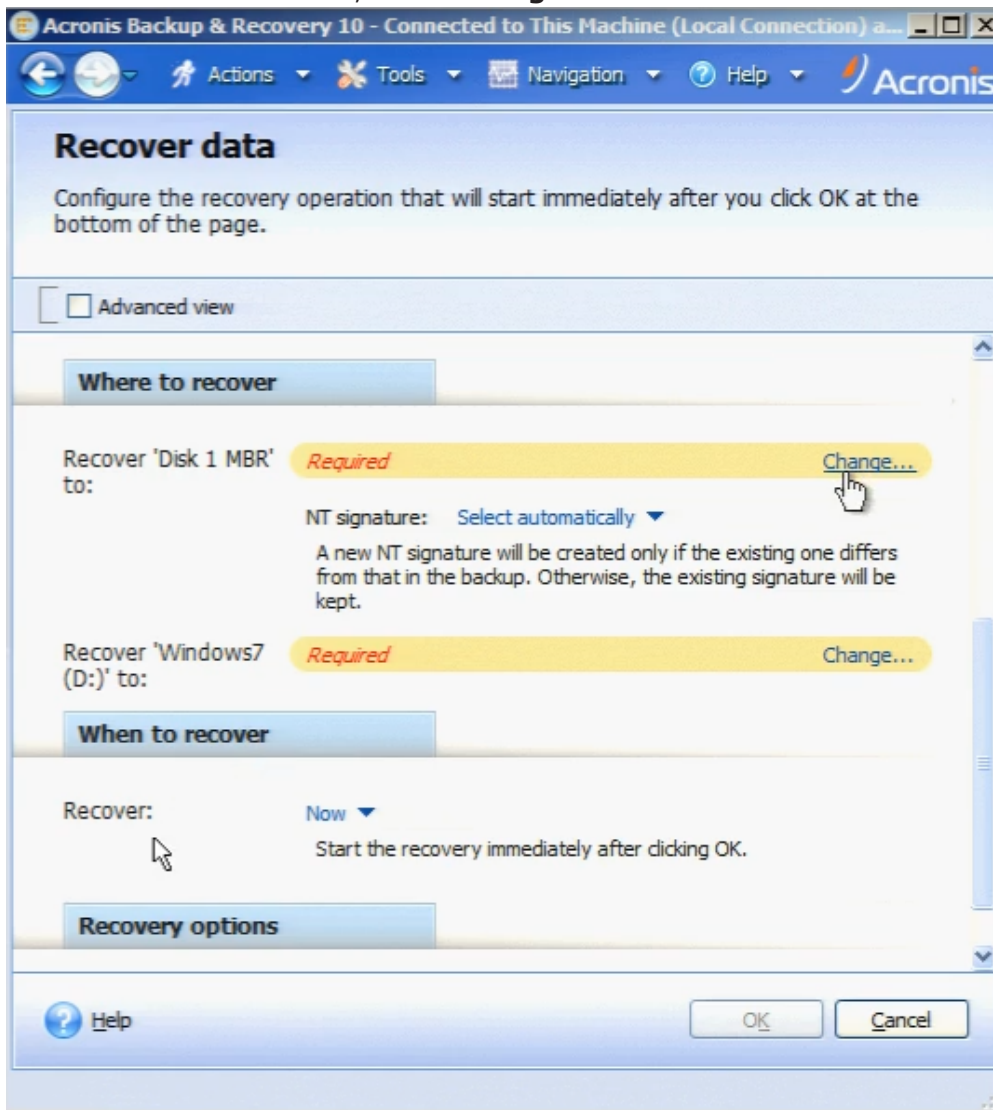


5. Under **What to recover**, select **Change**. The **Backup Archive Selection** window appears.

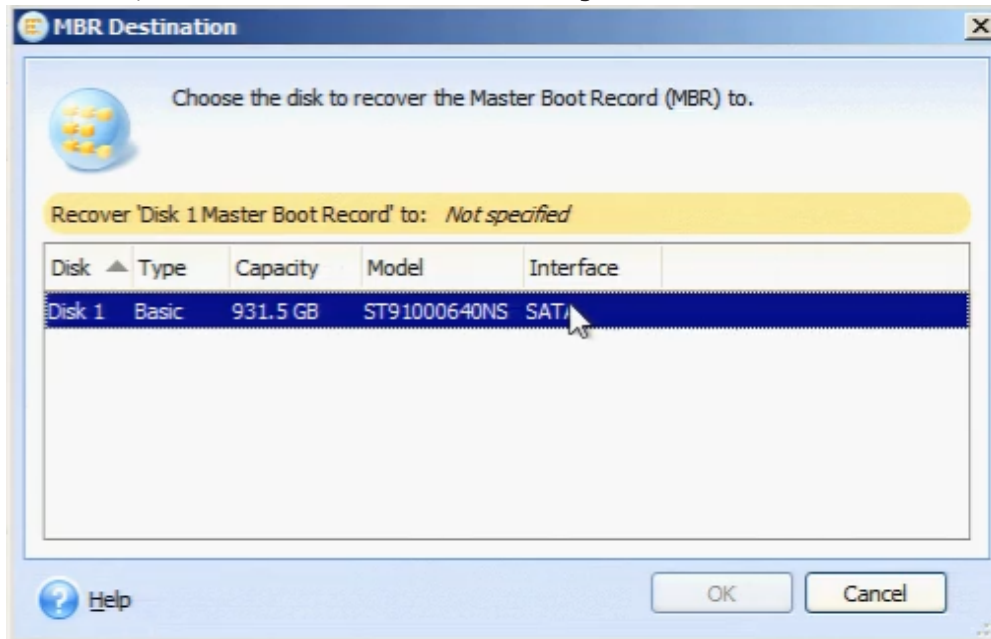


6. Browse to **Local Folders\Recovery** where a backup of the Windows Chassis is available. Since there can be multiple backups available, choose the one with the latest timestamp and select **OK**.

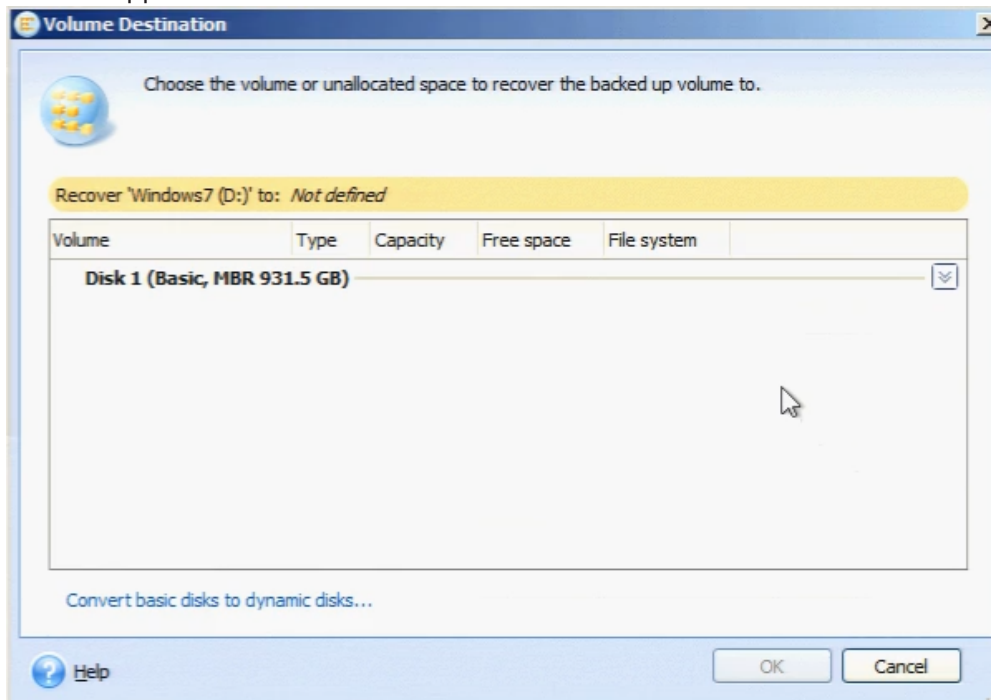
7. Under **Where to recover**, select **change for Recover Disk MBR**.



- In the **MIBR Destination** window, select the disk to which the master boot record is to be recovered, and then select **OK** to save changes and close the window.

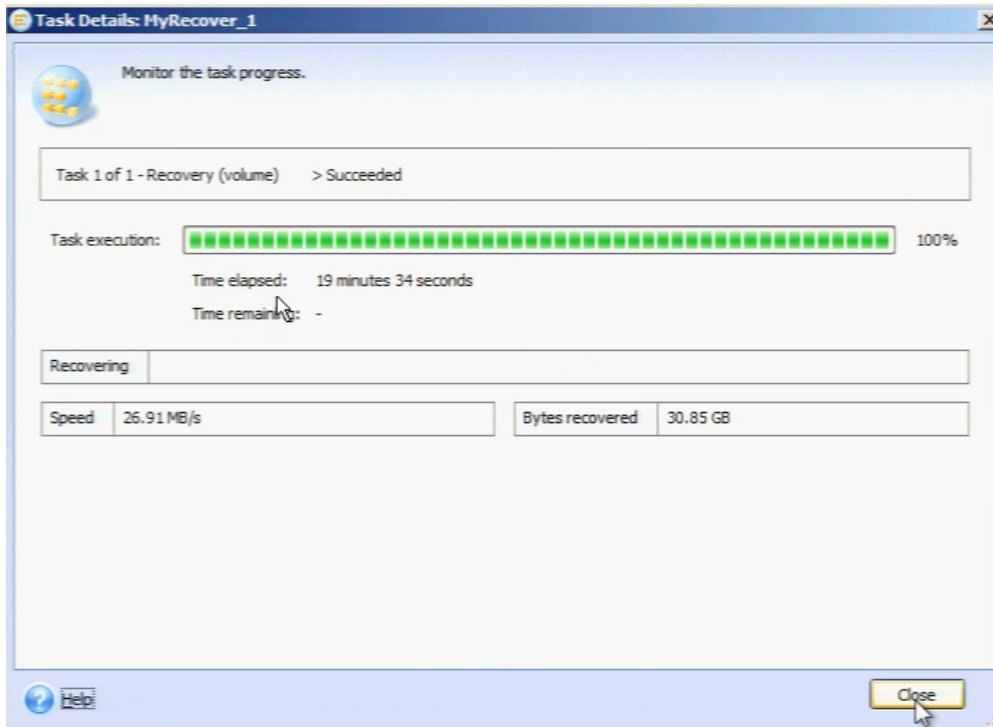


- Under **Where to recover**, select **change for Recover Windows**. The **Volume Destination** window appears.



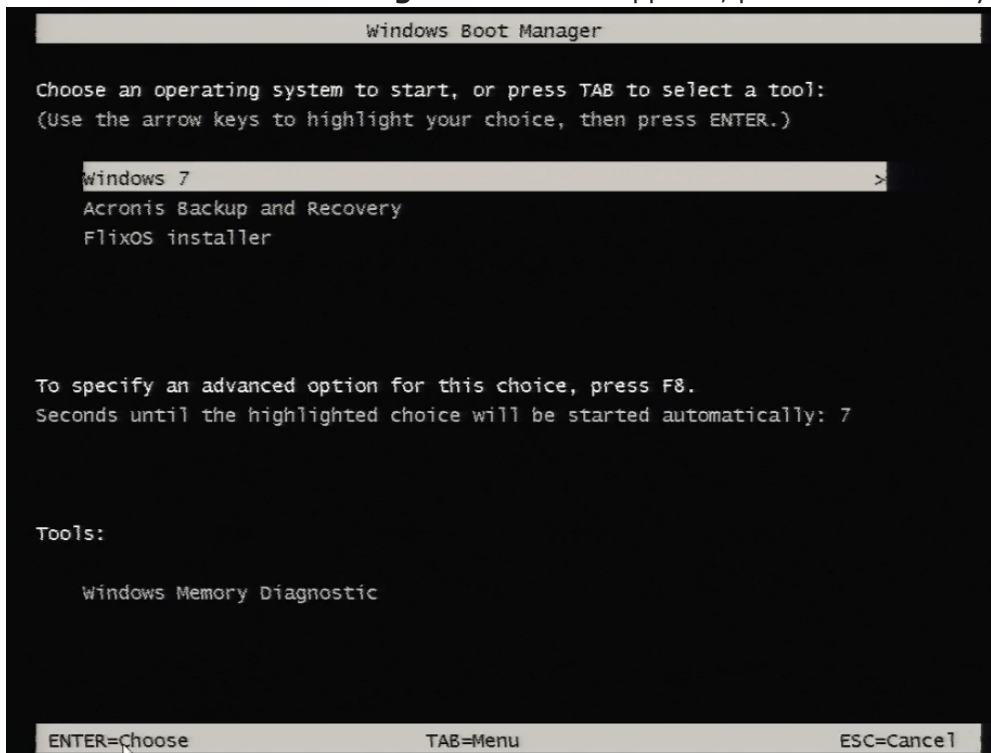
- Select Expand Icon to see the available options. Select the unallocated space to which the backed up volume is to be recovered.
- Select **OK** to save changes and close the window.

12. In the **Recover Data** window, scroll down further and select **OK** to start the recovery process.
13. Wait for the task execution to reach 100 percent. Click **Close** after Recover status is set to **>Succeeded**.



14. In the **Recover Data** window, select **Actions**, and then select **Exit**.

15. In the **Windows Boot Manager** window that appears, press the Enter key to start Windows 7.



16. You need to reactivate the IxOS, IxNetwork and IxLoad licenses used on Native IxOS machine after the revert process. The chassis is in brand new state. You can now proceed with installing Ixia applications that you need on this chassis.

This page intentionally left blank.

INDEX

A

about this guide i

C

chassis 3

converting to native IxOS 3

D

deprecated words iv

documentation conventions iv

K

keyboard interactions iv

M

mouse interactions iv

P

prerequisites 1

R

restoring chassis 9

restoring to windows 9

T

touch interactions iv

