



# XGS Chassis Windows 10 Upgrade Guide

Release 9.00

# Notices

## Copyright Notice

© Keysight Technologies 2019–2019

No part of this document may be reproduced in any form or by any means (including electronic storage and retrieval or translation into a foreign language) without prior agreement and written consent from Keysight Technologies, Inc. as governed by United States and international copyright laws.

## Warranty

The material contained in this document is provided “as is,” and is subject to being changed, without notice, in future editions. Further, to the maximum extent permitted by applicable law, Keysight disclaims all warranties, either express or implied, with regard to this manual and any information contained herein, including but not limited to the implied warranties of merchantability and fitness for a particular purpose. Keysight shall not be liable for errors or for incidental or consequential damages in connection with the furnishing, use, or performance of this document or of any information contained herein. Should Keysight and the user have a separate written agreement with warranty terms covering the material in this document that conflict with these terms, the warranty terms in the separate agreement shall control.

## Technology Licenses

The hardware and/or software described in this document are furnished under a license and may be used or copied only in accordance with the terms of such license.

## U.S. Government Rights

The Software is “commercial computer software,” as defined by Federal Acquisition Regulation (“FAR”) 2.101. Pursuant to FAR 12.212 and 27.405-3 and Department of Defense FAR Supplement (“DFARS”) 227.7202, the U.S. government

acquires commercial computer software under the same terms by which the software is customarily provided to the public. Accordingly, Keysight provides the Software to U.S. government customers under its standard commercial license, which is embodied in its End User License Agreement (EULA), a copy of which can be found at

<http://www.keysight.com/find/sweula> or <https://support.ixiacom.com/support-services/warranty-license-agreements>.

The license set forth in the EULA represents the exclusive authority by which the U.S. government may use, modify, distribute, or disclose the Software. The EULA and the license set forth therein, does not require or permit, among other things, that Keysight: (1) Furnish technical information related to commercial computer software or commercial computer software documentation that is not customarily provided to the public; or (2) Relinquish to, or otherwise provide, the government rights in excess of these rights customarily provided to the public to use, modify, reproduce, release, perform, display, or disclose commercial computer software or commercial computer software documentation. No additional government requirements beyond those set forth in the EULA shall apply, except to the extent that those terms, rights, or licenses are explicitly required from all providers of commercial computer software pursuant to the FAR and the DFARS and are set forth specifically in writing elsewhere in the EULA. Keysight shall be under no obligation to update, revise or otherwise modify the Software. With respect to any technical data as defined by FAR 2.101, pursuant to FAR 12.211 and 27.404.2 and DFARS 227.7102, the U.S. government acquires no greater than Limited Rights as defined in FAR 27.401 or DFAR 227.7103-5 (c), as applicable in any technical data. 52.227-14 (June 1987) or DFAR 252.227-7015 (b) (2) (November 1995), as applicable in any technical data.

*Bluetooth*® and the *Bluetooth*® logos are registered trademarks owned by Bluetooth SIG, Inc., and any use of such marks by Keysight Technologies is under license.

This page intentionally left blank.

## Conventions Used in this Guide

---

The following notational conventions are used in this guide.

Text is **bolded** to highlight important information.



The caution symbol denotes information that is of critical importance to the operation of the NTO.



The electrical hazard symbol indicates that the power supplies in your system may produce high voltages and energy hazards, which can cause bodily harm.



The hot surface symbol indicates that a surface or component is hot.



The electrostatic discharge (ESD) symbol indicates proper antistatic precautions should be taken to avoid damaging electronic equipment including printed circuit boards and components that are sensitive to static electricity.



The pointer symbol indicates that the information that follows provides helpful tips on how to use and configure the NTO.



**Note:** Notes are written like this.

---

## Purpose and Upgrade Process Outline

---


This document describes the steps needed upgrade an Ixia XGS Chassis to Windows 10.

The first step in the upgrade process is to back up and replace the XGS Chassis Windows 7 OS partition with an Ixia XGS Chassis Windows 10 base image. The Data partition with Acronis backup images are not affected.

The following is an outline of the steps required to accomplish this upgrade task:

- Create an Acronis Recovery Image
- Replace the XGS Chassis Windows 7 partition with an XGS Chassis Windows 10 partition
- Windows 10 first-boot procedure
- Windows 10 Activation
- IxOS 9.00 Installation
- IxOS Windows 10 Upgrade License Activation

---

 **Note:** Ensure this Upgrade Guide is available on another system or printed since it will not be available during portions of the upgrade process.

---

## Prerequisites

---

The following are the prerequisites for upgrading an Ixia XGS Chassis to Windows 10:

- Check to ensure you have the upgrade product 943-0014 IXIA IXOS AND WINDOWS 10 FIELD UPGRADE which includes the USB and Windows 10 license sticker.
- Check that the chassis to be upgraded is an XGS 940-0010, 940-0011 or 940-0110.
- Ensure there is physical access to the chassis to be upgraded.
- Obtain the license activation key that is emailed as part of purchase of upgrade product 943-0014.
- Print or display these instructions on another system since the system being upgraded will not be available for document viewing.

## Procedures

---

The procedures for Windows 10 field upgrade are described in the following sections.

### Create Acronis Recovery Image

You need to create an Acronis recovery image to preserve the Windows 7 image, if you want to revert to this operating system at a future date.

To create Acronis recovery image, do the following:

1. Power on the chassis, watch for Windows Boot Manager, and select Acronis Backup and Recovery.
2. Acronis Backup and Recovery: Select **Back up**.
3. Back up Options: What to back up – Select **Change**, Check only Windows7 (D:). Select **OK**.
4. Back up Options: Where to back up – Select **Change**, Navigate to Local Folder > Data (E:) > Recovery. Choose Name: and type **RecoveryImage**. Select **OK**.
5. Back up Options: How to back up – Select **Backup type: Full**.
6. Back up Options: Backup Options, Select **Change**. Select **Compression Level**, Select **Maximum**. Select **OK**.
7. Back up Options: Select **OK** to begin Acronis Image Creation.
8. When the process is complete, close the Backup Status window.
9. Acronis Backup and Recovery: Actions > **Exit**.
10. In the Command Prompt window, type 'exit' and press **Enter**. Reboot the chassis.

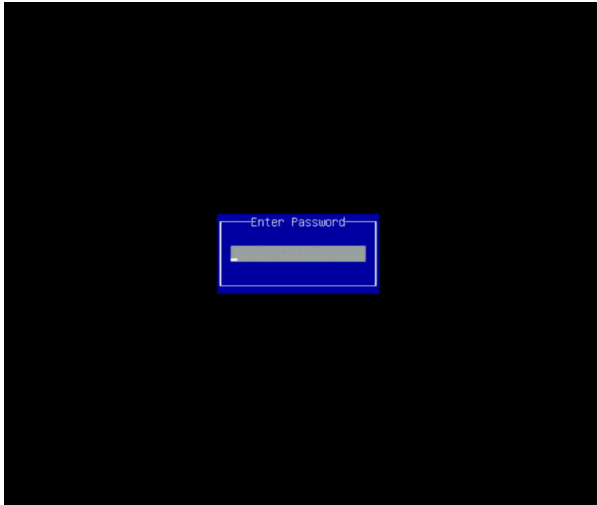
### Windows 10 Upgrade Using Partition Replacement Procedure

The Windows 10 partition replacement procedure is outlined as follows:

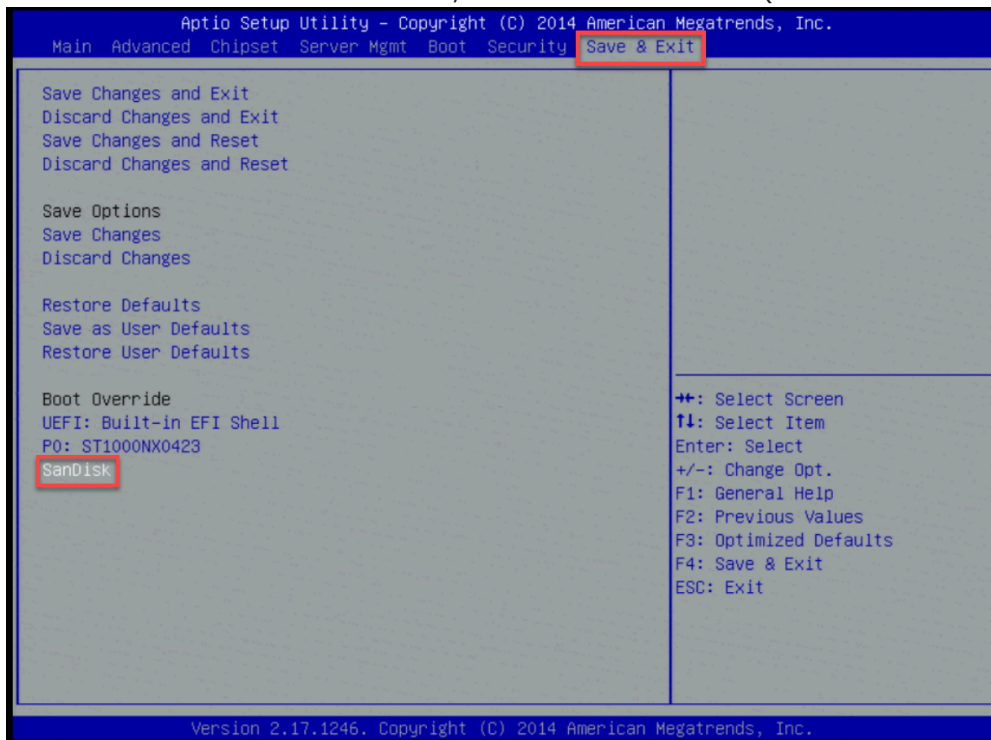
1. Ensure all user data has been moved to the **Data** partition. All data in the “Windows7” partition will be overwritten.
2. Ensure an Acronis image backup is available.
3. During chassis boot, press **DEL** to enter Setup. (Repeatedly press DEL while the Ixia logo is shown.)



4. If an **Enter Password** prompt appears, leave the prompt blank and press **ENTER**.

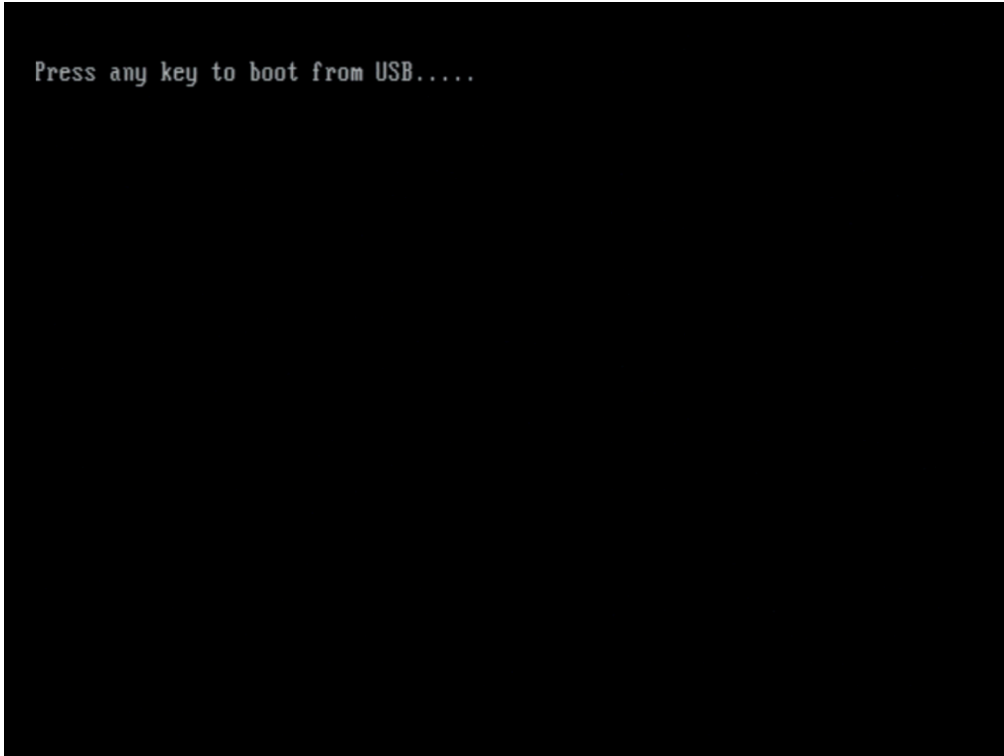


5. In the Aptio Setup Utility, navigate to the **Save & Exit** tab.
6. Under the **Boot Override** section, select the USB device ("SanDisk" in this example.)

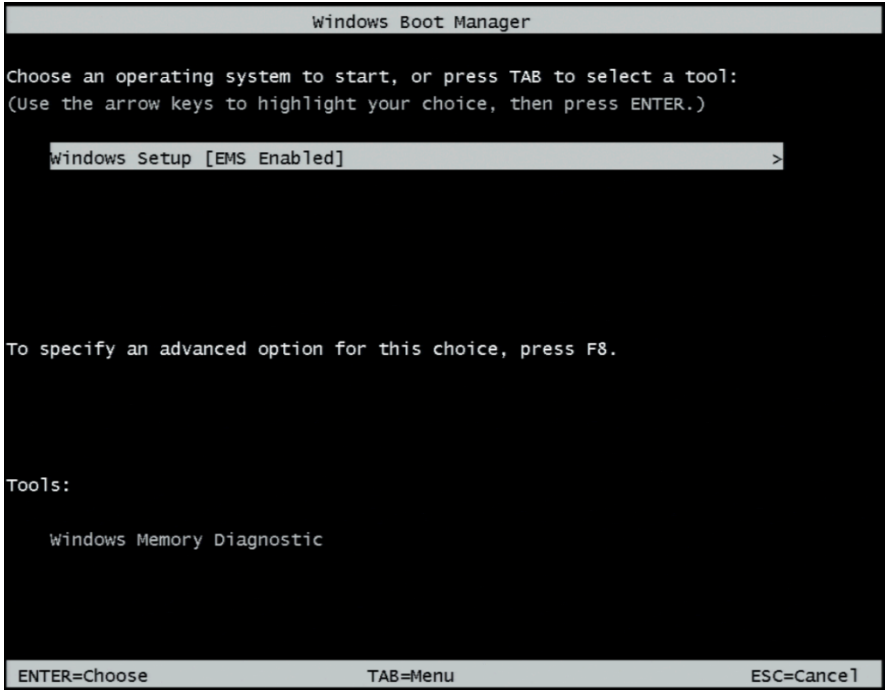


7. The screen should go black and display "Press any key to boot from USB". Press **ENTER**.

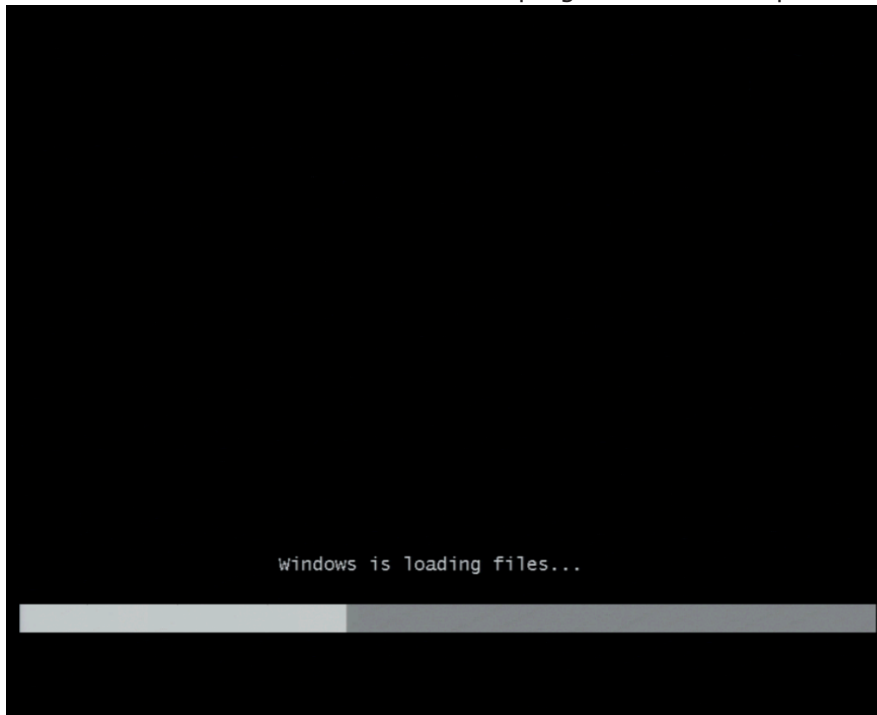




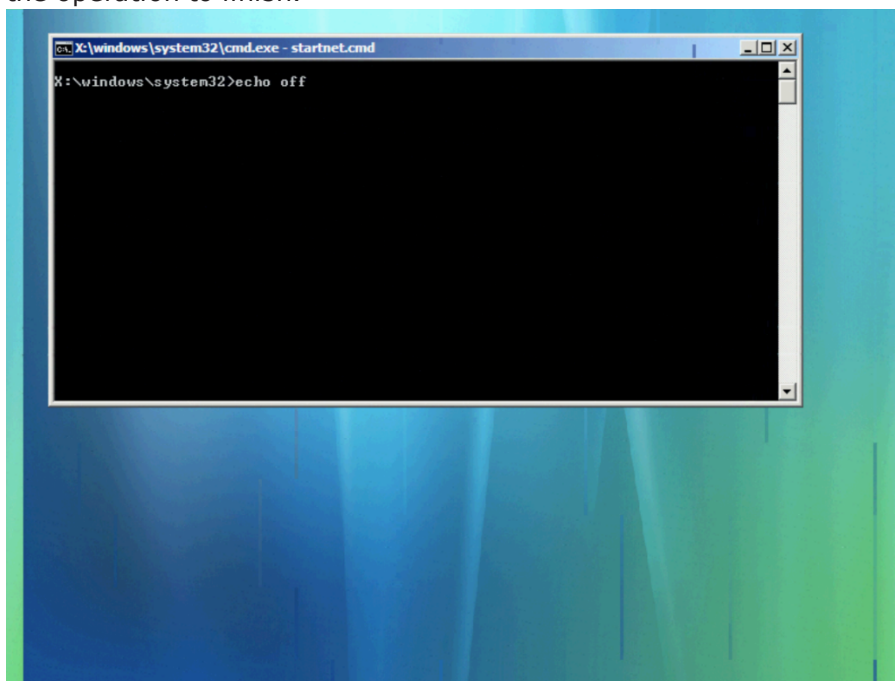
- 8. On the **Windows Boot Manager** screen, press **ENTER** to select **Windows Setup**.



9. Windows PE will now boot. Wait for the progress bar to complete.




10. Once Windows PE has booted, the following command prompt will automatically appear. Wait for the operation to finish.



11. A new command prompt appears with the line "Ixia Windows 10 Chassis Upgrade", asking to confirm that the Windows partition will be erased. Ensure all data is backed up. When ready, press any key to begin.


12. Wait for Ghost to complete rewriting the Windows partition. Once complete, it restarts automatically.
13. Ensure the system reboots into Windows 10.
14. The system may spend several minutes preparing the desktop, which may require several reboots. Ensure the Windows 10 login prompt appears.

 **Note:** When booting for the first time, the menu item in Windows Boot Manager may still say "Windows 7". This does not indicate a failed upgrade and is corrected at the next step.

---

## Windows 10 First-Boot Procedure

1. On the Windows 10 login screen, login as user **test**. Use the password **test**.
2. Wait until the account completes first-time configuration. The desktop should appear within several minutes.
3. Open a File Explorer window, locate the Ixia Windows 10 Upgrade USB, and navigate to the **Scripts** folder.
4. Locate the file named **upgrade-post-sysprep.ps1**.
5. Select the file, open the context menu, and then select **Run with powershell**. You may also need to run this as administrator.
6. In some cases, a warning or a message appears prompting you to accept the changes. Select **Yes to All**.
7. When prompted, enter the 6-digit serial number of the Standard Performance Controller Module and press **Enter**.  
The serial number is printed on the label at the front of each controller.
8. The script makes the necessary changes and reboots.
9. After the computer reboots successfully, the chassis is ready for installation of Ixia software.

 **Note:** After the system reboots, you can log in as the **ixia** user. The password will be the 6-digit serial number you entered earlier.

---

## Windows 10 License Activation

1. Obtain the Windows 10 license key from the label in the upgrade kit.
2. Navigate to Start > Settings > Update & Security > Activation.
3. Select **Change product key**.
4. Enter the product key and then select **Next** to complete activation. This step requires connection to the internet to complete the Microsoft license activation.

For additional information, visit <https://support.microsoft.com/en-us/help/12440/windows-10-activate>.

## IxOS 9.00 Installation

Download a copy of IxOS installer (.exe file) from Ixia website.

IxOS installer installs IxExplorer and server components like Demo Server, TCL Server, and Hardware Manager.

Perform the following installation steps:

1. A dialogue box appears providing option for changing Installer Cache path where installer and helper files are stored. You should change it to a location which does not require administrative privileges. Select **Next** to proceed.
2. Installer starts unpacking files after which, setup progress window appears and package integrity check is performed. Wait for the check to complete.
3. After package integrity check passes, a separate welcome dialog box appears indicating that setup is ready to begin. Select **Next** to proceed with the installation. The setup wizard guides you through the next steps.

For downloading the installer files, go to <https://support.ixiacom.com/ixos-software-downloads-documentation>.

For details on Windows 10 installation procedure, see *IxOS Getting Started Guide* at <https://support.ixiacom.com/user-guide/ixos-user-guides>.

## IxOS Windows 10 Upgrade License Activation

Ixia Licensing Utility (ILU) manages the licenses issued by Ixia for its various products. To open the ILU application, select Start > All Programs > Ixia > LicenseServerPlus > Ixia Licensing Utility.

You need to activate licenses that are on the chassis before you upgrade to Windows 10.

The following license needs to be present in the license server being used by IxServer on any system that is upgraded to Windows 10.

If not, IxServer will not start up.

Part Number	Description	License Expiration	Maintenance Expiration	Quantity	Activation Code
<b>Product: IxOS</b>					
<input checked="" type="checkbox"/> 922-0001-02	IXIA FRAMEWORK (IxServer), IXOS SOFTWARE, NODE-LOCKE...	09-Jun-2019	09-Jun-2019	1	1A1B-E11D-E917-3BDF
<input type="checkbox"/> 943-0014-01	IXIA IXOS AND WINDOWS 10 FIELD UPGRADE for XGS prod...	27-Nov-2019	27-Nov-2019	1	6E28-567B-6C9A-2524

For details on activating licenses, see *Ixia Licensing Utility Guide*.

# Acronis Backup and Recovery Procedure – Windows 7

---

Acronis backup and recovery procedure helps you to revert your operating system to Windows 7. The procedures for Acronis backup and recovery are described in the following sections.

## Applicability

The information in this bulletin applies to all Ixia Chassis running Microsoft Windows 7 that include Acronis Backup and Recovery imaging software.

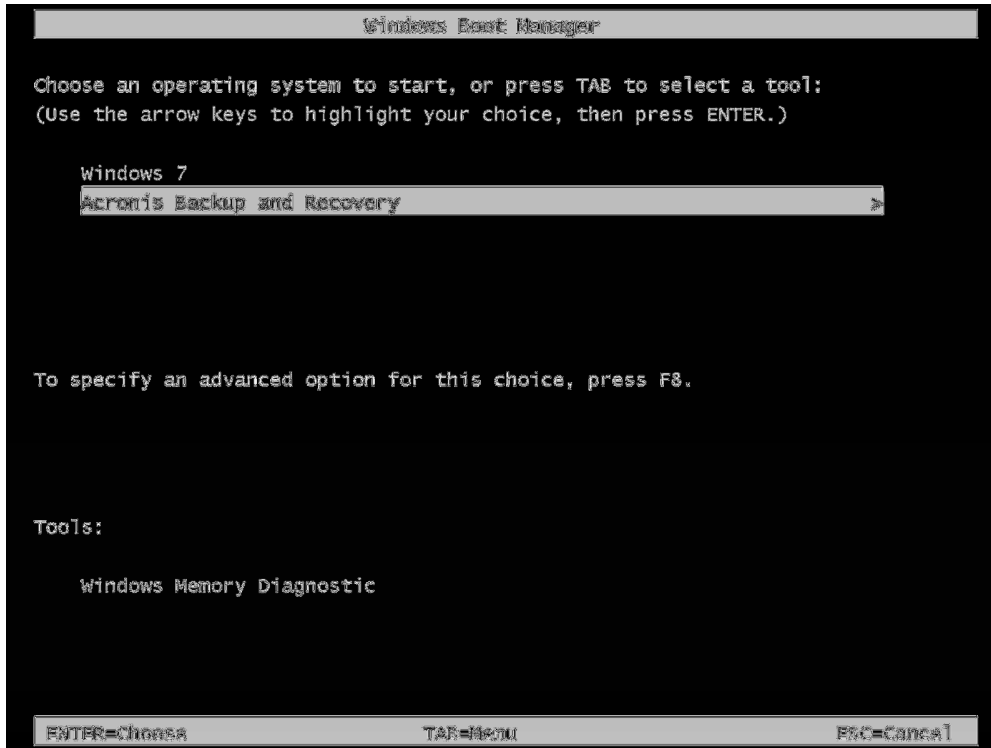
## Summary

Ixia Chassis include Acronis Backup and Recovery imaging software. Acronis software allows for restoration of disk images without a network connection or boot media.

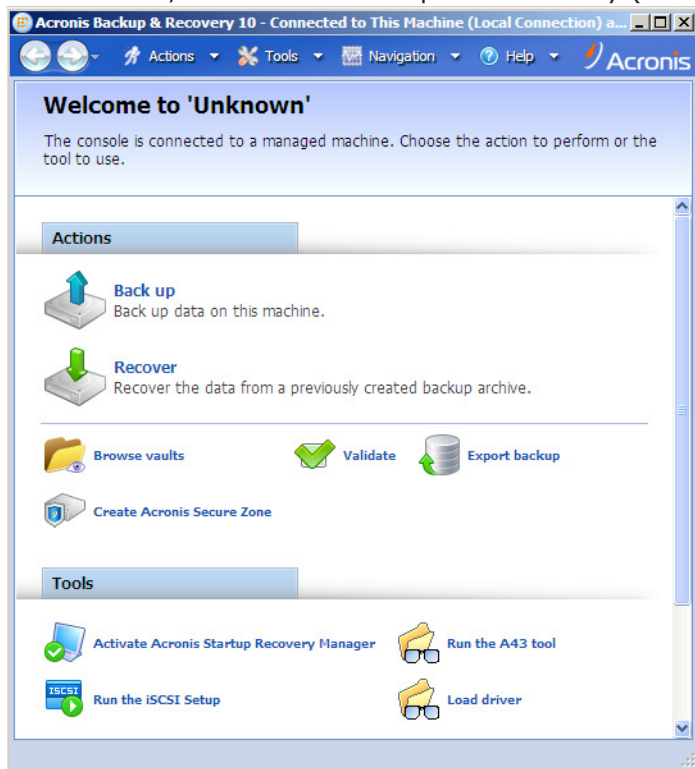
Restoration of the recovery image will return the chassis to the “As Shipped” configuration when the chassis left the Ixia Manufacturing Floor. It will include the version of IxOS that shipped with the chassis as well as AntiVirus software.

## Restoring a Disk image

During chassis boot, select the **Acronis Backup and Recovery** option from the Windows Boot Manager. This loads the Acronis Linux Partition.

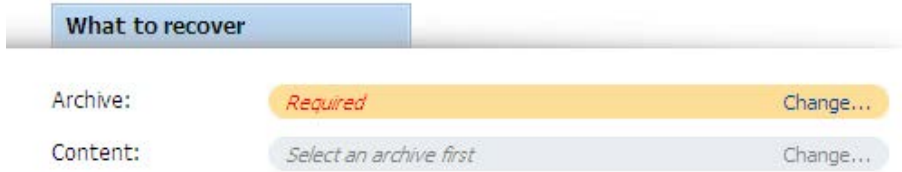


Once loaded, the Acronis Backup and Recovery (ABR) console appears as follows.

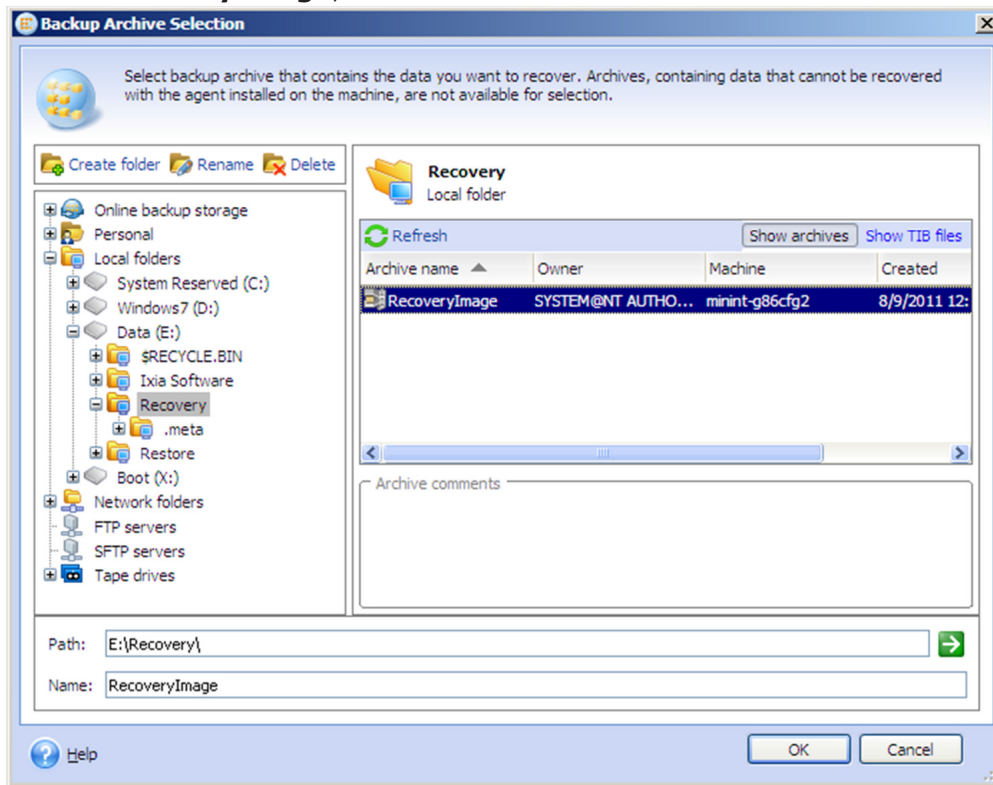


To perform recovery, do the following:

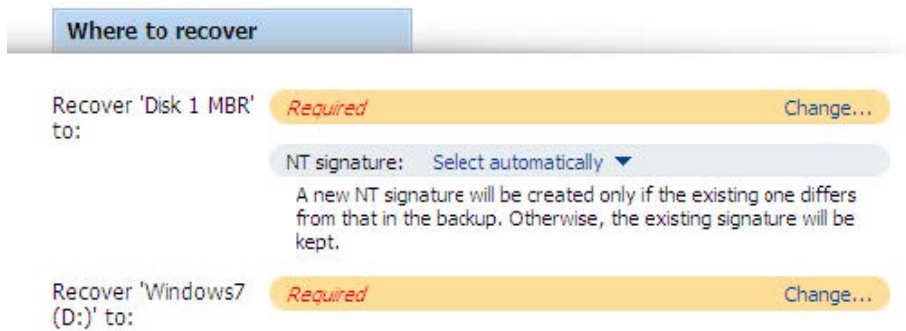
1. In the **Actions** section, select **Recover**.
2. In the Recover Console, under the **What to recover** section, select **Change**.



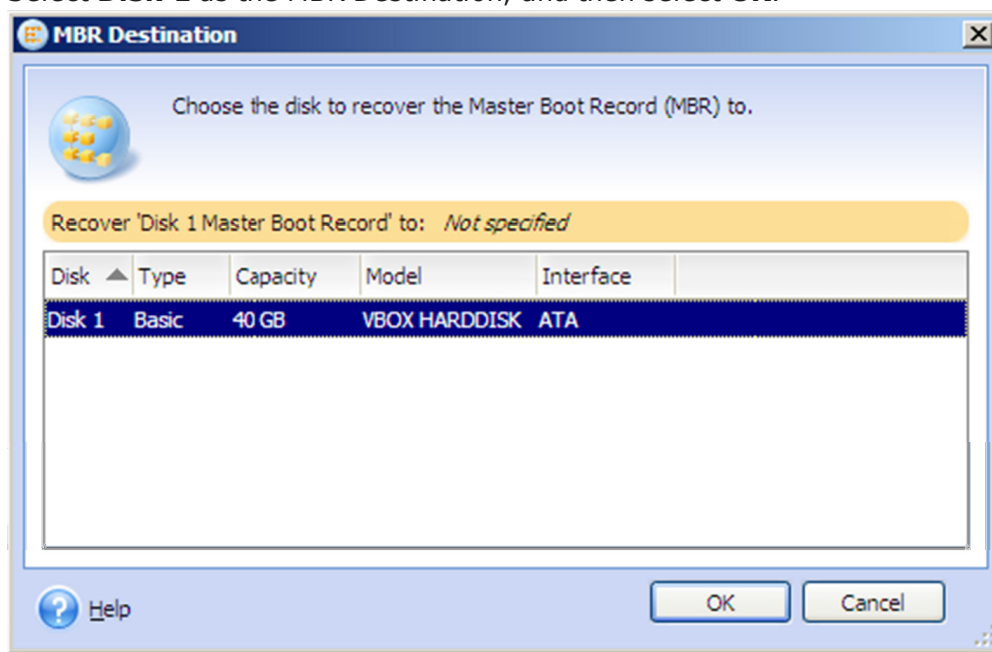
3. In the **Backup Archive Selection** window, navigate to Local Folders >Data >Recovery. Select **RecoveryImage**, and then select **OK**.



- In the Recover Console, scroll down to the **Where to recover** section. Select **Change** next to **Recover 'Disk 1 MBR' to**.



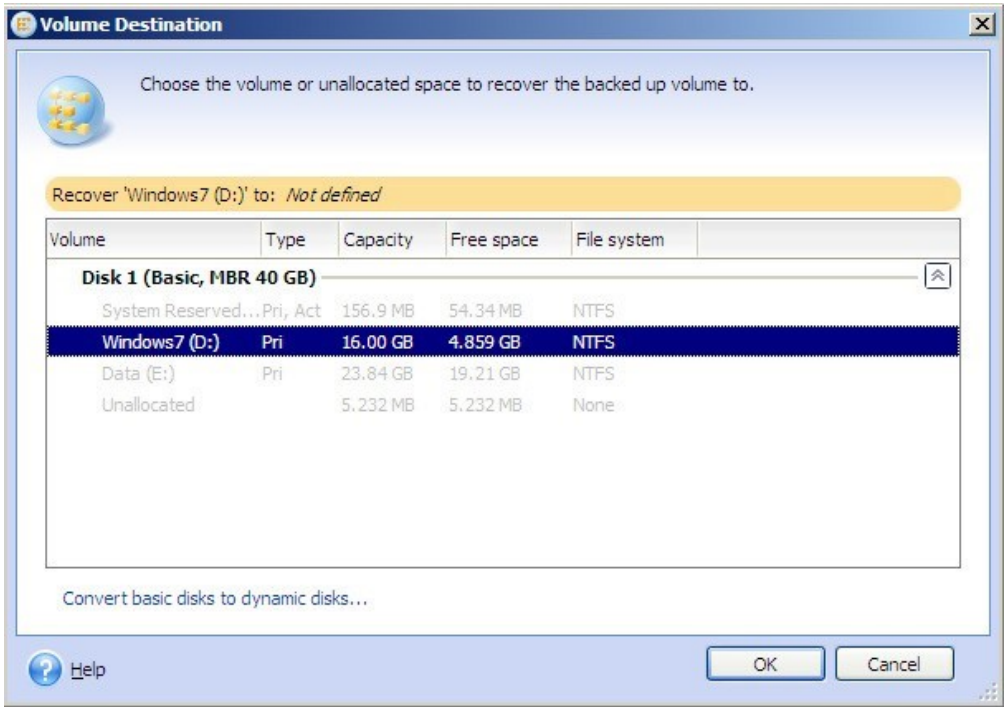
- Select **Disk 1** as the MBR Destination, and then select **OK**.



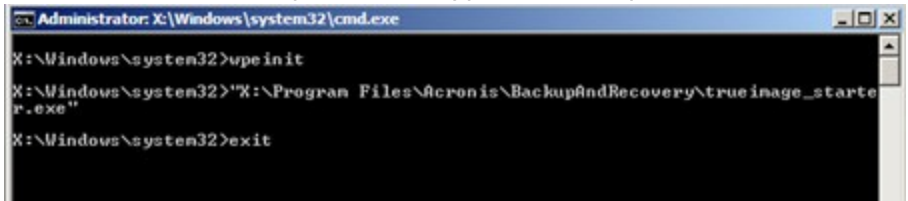
- Return to the **Where to recover** section, and then select **Change** next to **Recover Windows 7 to**.



- 7. Select the **Windows7** volume, and then select **OK**.



- 8. Return to the Recover Console and select **OK**. The image recovery begins.
- 9. After the recovery is complete, close the status Window and from the ABR Console select **Actions>Exit**.
- 10. In the Command Prompt window, type **exit** and press **Enter**. The chassis reboots.



# Revision Policy

---

## **817-1019-01 Windows 10 Reimage from Windows 7, Acronis Revert**

This document shall be controlled, approved, distributed, and revised electronically through Document Control.

# Confidentiality

---

## **817-1019-01 Windows 10 Reimage from Windows 7, Acronis Revert**

THIS DOCUMENT AND THE DATA DISCLOSED HEREIN OR HERewith IS PROPRIETARY AND IS NOT TO BE REPRODUCED, USED OR DISCLOSED IN WHOLE OR IN PART TO ANYONE WITHOUT THE WRITTEN PERMISSION OF IXIA COMMUNICATIONS. COPYRIGHT, © IXIA 2009

