



FLIX OS Upgrade Guide

FlixOS-2016.2.0.32, Dec. 2016

Version 1.0



Copyright and Disclaimer

Copyright © 2016 Ixia. All rights reserved.

This publication may not be copied, in whole or in part, without Ixia's consent.

Ixia, the Ixia logo, and all Ixia brand names and product names in this document are either trademarks or registered trademarks of Ixia in the United States and/or other countries. All other trademarks belong to their respective owners.

The information herein is furnished for informational use only, is subject to change by Ixia without notice, and should not be construed as a commitment by Ixia. Ixia assumes no responsibility or liability for any errors or inaccuracies contained in this publication.

RESTRICTED RIGHTS NOTICE

As prescribed by FAR 27.409(b)(4) and in accordance with FAR 52.227-14, please take notice of the following.

(a) This proprietary computer software and/or software technical data is submitted with restricted rights. It may not be used, reproduced, or disclosed by the Government except as provided in paragraph (b) of this notice or as otherwise expressly stated in the applicable contract.

(b) This computer software and/or software technical data may be—

(1) Used or copied for use with the computer(s) for which it was acquired, including use at any Government installation to which the computer(s) may be transferred;

(2) Used or copied for use with a backup computer if any computer for which it was acquired is inoperative;

(3) Reproduced for safekeeping (archives) or backup purposes;

(4) Modified, adapted, or combined with other computer software, provided that the modified, adapted, or combined portions of the derivative software incorporating any of the delivered, restricted computer software shall be subject to the same restricted rights;

(5) Disclosed to and reproduced for use by support service Contractors or their subcontractors in accordance with paragraphs (b)(1) through (4) of this notice; and

(6) Used or copied for use with a replacement computer.

(c) Notwithstanding the foregoing, if this computer software and/or software technical data is copyrighted computer software and/or software technical data, it is licensed to the Government with the minimum rights set forth in paragraph (b) of this notice.

(d) Any other rights or limitations regarding the use, duplication, or disclosure of this computer software and/or software technical data are to be expressly stated in, or incorporated in, the applicable contract.

(e) This notice shall be marked on any reproduction of this computer software, in whole or in part.

(End of notice)

Corporate Headquarters	<p>Ixia Worldwide Headquarters 26601 W. Agoura Rd. Calabasas, CA 91302 USA +1 877 FOR IXIA (877 367 4942) +1 818 871 1800 (International) (FAX) +1 818 871 1805 sales@ixiacom.com</p>	<p>Web site: www.ixiacom.com General: info@ixiacom.com Investor Relations: ir@ixiacom.com Training: training@ixiacom.com Support: support@ixiacom.com +1 818 595 2599 For the online support form, go to: http://www.ixiacom.com/support/inquiry/</p>
EMEA	<p>Ixia Technologies Europe Limited Part 2nd Floor, Clarion House, Norreys Drive Maidenhead, UK SL6 4FL +44 (1628) 408750 (FAX) +44 (1628) 639916 salesemea@ixicom.com</p>	<p>Support: support-emea@ixiacom.com +40 21 301 5699 For the online support form, go to: http://www.ixiacom.com/support/inquiry/?location=emea</p>
Asia Pacific	<p>Ixia Pte Ltd 210 Middle Road #08-01 IOI Plaza Singapore 188994</p>	<p>Support: support-asiapac@ixiacom.com +91 80 4939 6410 For the online support form, go to: http://www.ixiacom.com/support/inquiry/</p>
Japan	<p>Ixia Communications KK Nishi-Shinjuku Mitsui Bldg 11F 6-24-1 Nishi-Shinjuku, Shinjuku-ku Tokyo 160-0023, Japan</p>	<p>Support: support-japan@ixiacom.com +81 3 5326 1980 For the online support form, go to: http://www.ixiacom.com/support/inquiry/</p>
India	<p>Ixia Technologies Pvt Ltd Tower 1, 7th Floor, UMIYA Business Bay Cessna Business Park Survey No. 10/1A, 10/2, 11 & 13/2 Outer Ring Road, Varthur Hobli Kadubeesanahalli Village Bangalore East Taluk Bangalore-560 037, Karnataka,</p>	<p>Support: support-india@ixiacom.com +91 80 4939 6410 For the online support form, go to: http://www.ixiacom.com/support/inquiry/?location=india</p>

China	Ixia Technologies (Shanghai) Company Ltd Unit 3, 11th Floor, Raffles City, Beijing Beijing, 100007 P.R.C.	Support: support-china@ixiacom.com 400 898 0598 (Greater China Region) +86 10 5732 3932 (Hong Kong)
<i>Change: 4150211, Date: September 24, 2013</i>		

Contents

Overview 1

Enhancements in 2016.2.0.32 1

Prerequisites 1

Select your Upgrade Method 2

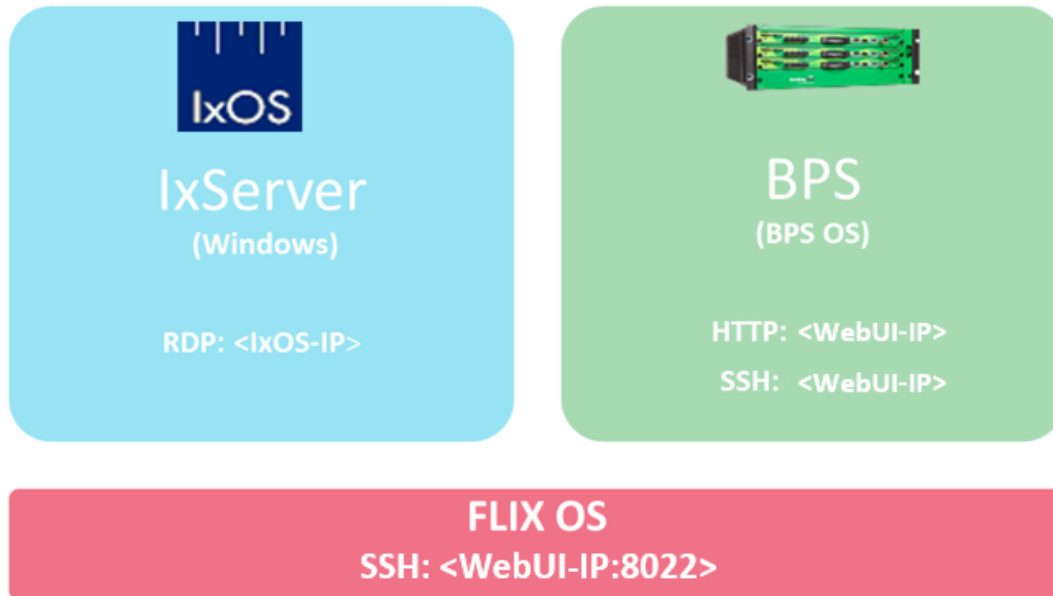
USB Flash Drive FLIX OS Upgrade 3

FTP FLIX OS Upgrade 5

Technical Support 8

Overview

FLIX OS is the foundation operating system required on the XGS12-HS Chassis and PerfectStorm ONE appliances. FLIX OS is the management Linux OS, hosting two virtual machines – IxOS and BPS OS.



This document details the instructions for updating the FLIX OS. The overall duration of the upgrade process is less than 10 minutes.

There are two methods available for updating the FLIX OS:

- **USB Flash Drive**
- **FTP**

Enhancements in 2016.2.0.32

- Added the convert to Native IxOS option (see *Converting_XGS_and_PSOOne_to_Native_IxOS guide*).

Prerequisites

- **Current FLIX OS Version:** Make sure that your current FLIX OS version complies with the following before starting an upgrade:
 - At least 1.2.0.23 to perform any FLIX upgrade (for older versions please consult Ixia Technical Support).
 - At least 1.2.0.23 or higher to perform a USB Flash Drive Upgrade.
 - At least 2015.1.0.66 or higher to perform a FTP Upgrade.
- **Ixia Downloads website access:** Access the Ixia Downloads website in order to download the FLIX OS Update File.

Note: Access to the Ixia Downloads website is not necessary if you have the USB Flash Drive provided by Ixia that contains the update file.

- **Accessibility to the chassis:**

- Ability to SSH on port 8022 to the Web UI IP address

Note: RDP connection to the Web UI IP address is not supported from Windows 10 at this time. To work around this issue, access the IxOS IP address from Windows 10.

- or Direct Access:

- XGS12-HS: Monitor+ USB Keyboard or KVM and physical access to the chassis
- PerfectStorm ONE : serial cable connected to RS232
 - use UTF-8 character set with VT100 terminal
 - set speed to 115200, data bits: 8:, stop bits: 1, parity: None, set Flow Control: None

- **For FTP Upgrade:** A FTP server that does not require a password for access.

- **For USB Flash Upgrade:**

- USB flash drive formatted with a FAT32 file system (128GB or less) or USB Flash Drive provided by Ixia that contains the update file.

Select your Upgrade Method

Select the method that you will use to upgrade your system.

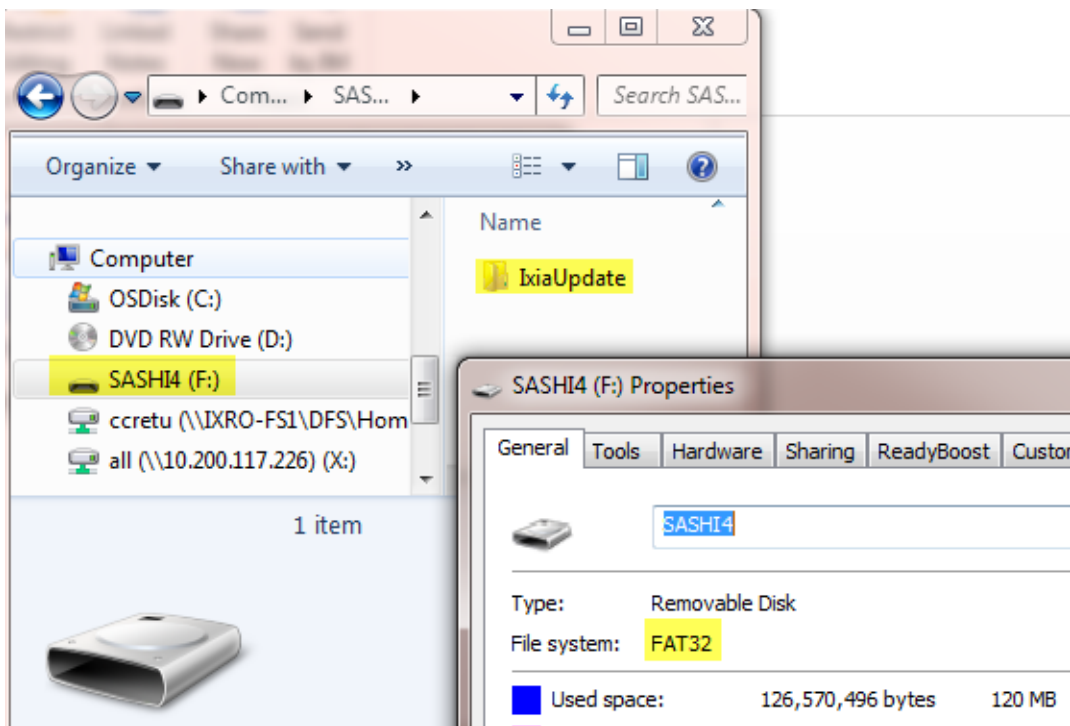
[USB Flash Drive Flix OS Upgrade](#)

[FTP Flix OS Upgrade](#)

USB Flash Drive FLIX OS Upgrade

1. Connect to the chassis and verify that it is [eligible for the USB Flash Drive upgrade](#).
 - a. Use any of the connection methods described under [Accessibility to the chassis](#) in the Prerequisites section.
2. Log in as **user** admin / **password** admin to access the administration menu.

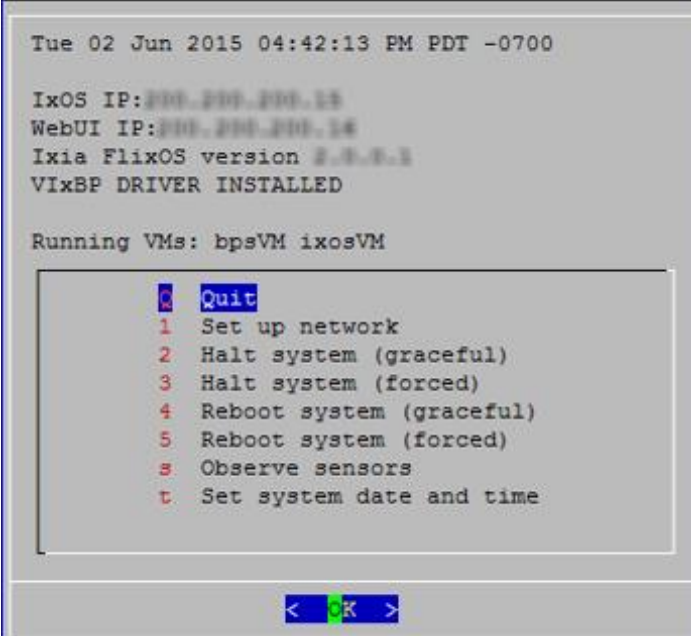
Note: If you have the Upgrade USB Flash Drive provided by Ixia, skip to Step 6 of this procedure.
3. Download the FLIX OS USB Update Package with the version 2016.2.0.32 from the following location: <http://www.ixiacom.com/support-overview/product-support/downloads-updates/versions/21>.
4. Format a generic USB flash drive using the FAT 32 file system and unzip the package on to it.
5. You should see a directory structure similar to "F(USB):/IxiaUpdate" after extraction (see image below).



6. Connect the USB flash drive to the chassis.

Note: Ixia validated this functionality with multiple brands of USB flash drives that store less than 128 GB of data.

7. Reboot the chassis from the admin screen.
 - a. The admin menu will look similar to the image shown below. Please select Option 5 (forceful reboot), and wait for the chassis to restart.



```
Tue 02 Jun 2015 04:42:13 PM PDT -0700

IxOS IP:200.200.200.13
WebUI IP:200.200.200.14
Ixia FlixOS version 2.3.2.1
VIxBP DRIVER INSTALLED

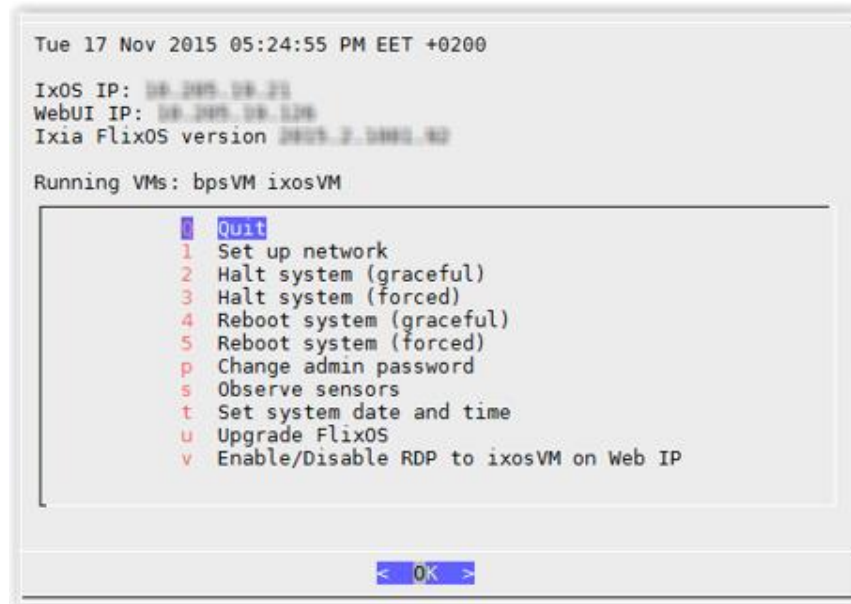
Running VMs: bpsVM ixosVM

Quit
1 Set up network
2 Halt system (graceful)
3 Halt system (forced)
4 Reboot system (graceful)
5 Reboot system (forced)
s Observe sensors
t Set system date and time

< 5k >
```

8. Wait for the upgrade to finish and then validate it.
 - a. During the boot phase, you will see output showing several components being updated. This process takes less than 10 minutes and ends when the login prompt appears (only for direct access not available for SSH).
 - b. Log into the system again as user admin, password admin to access the administration menu.
 - Verify that all VMs are running.
 - Verify the Ixia FLIX OS upgrade version.

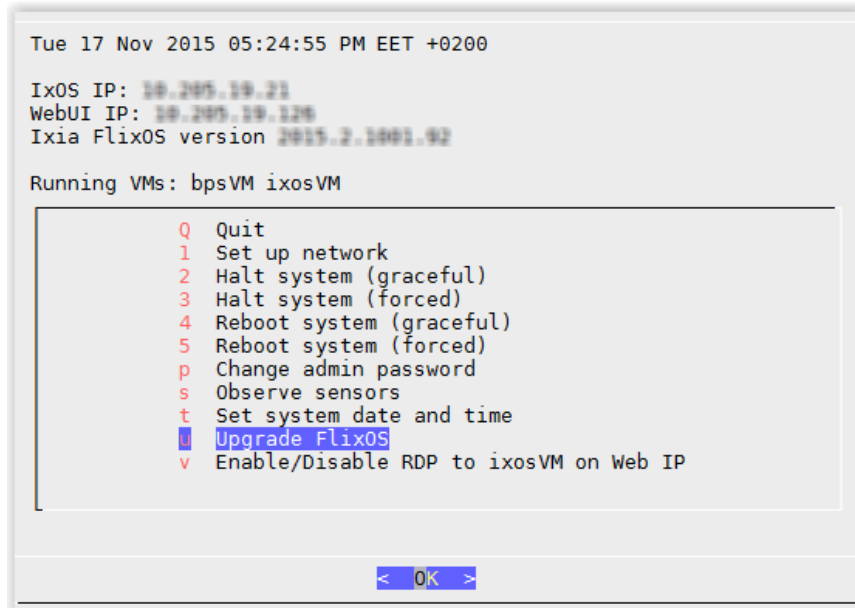
Note: The admin screen will be similar to the image shown below. Ensure that it displays the same FLIX OS version as the upgrade.



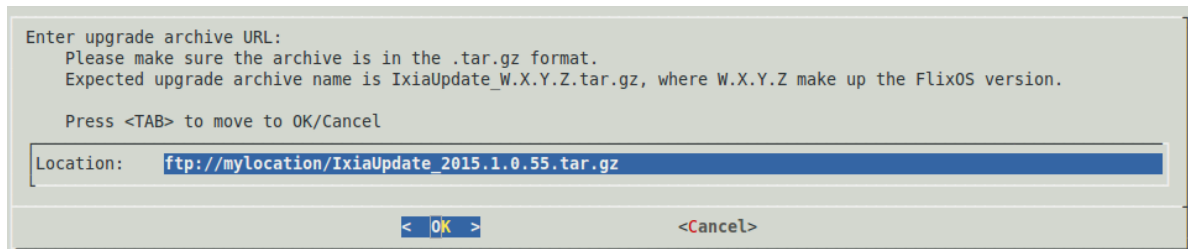
FTP FLIX OS Upgrade

1. Connect to the chassis and verify that it is eligible for the FTP upgrade. The version must be at least 2015.1.0.66 or higher to perform a FTP Upgrade.
 - a. Use any of the connection methods described under [Accessibility to the chassis](#) in the Prerequisites section.
2. Download the FLIX OS FTP Update Package and place it in a directory on your FTP server that does not require a password for access.
 - a. Download the FLIX OS tar.gz file with the version 2016.2.0.32 from the following location: <http://www.ixiacom.com/support-overview/product-support/downloads-updates/versions/21>.

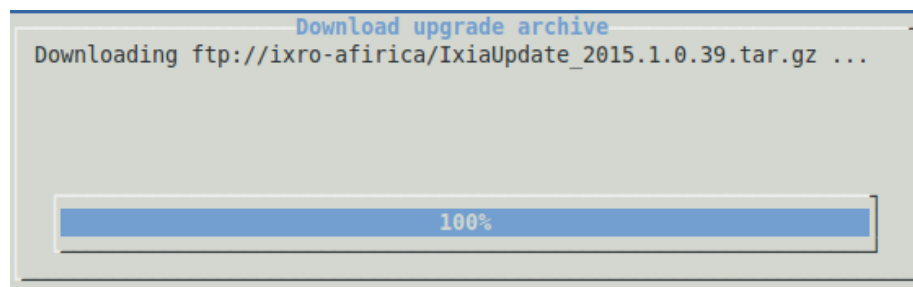
Note: Do not unpack the Update file.
3. In admin, select the **Upgrade FlixOS** option.
 - a. At the admin interface, select the **Upgrade FlixOS** option from the menu, as shown in the figure below. To select the option, use the keyboard arrows or press the **u** key on your keyboard and then press the **Enter** key.



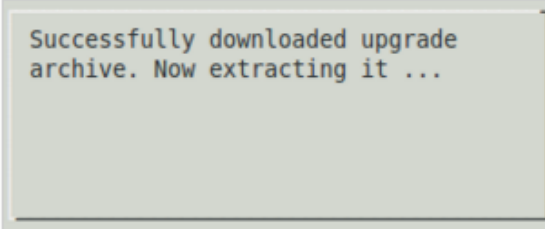
4. Indicate the location and name of the update file.
 - a. Enter a valid URL and file name in the **Location** field as shown in the image below. You must specify a FTP or HTTP URL.
Note: On some Windows terminal emulators, the Ctrl+V command will not allow you to paste a value into a field. The Shift+Insert command may allow you to accomplish this task.



5. Confirm that you want to upgrade the Flix OS
 - a. With the **OK** option highlighted, press the Enter key.
6. View the download progress and installation confirmations.
 - a. The following progress bar is displayed during the download of the update file.

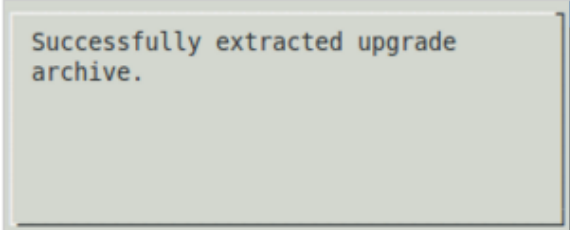


- a. Download completion confirmation is displayed.



```
Successfully downloaded upgrade
archive. Now extracting it ...
```

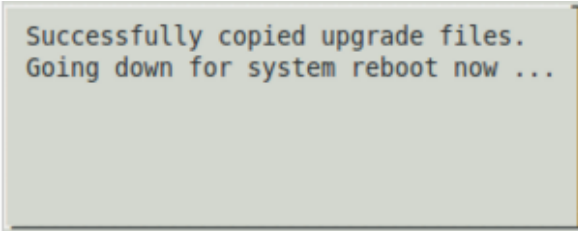
- c. Extraction completion confirmation is displayed.



```
Successfully extracted upgrade
archive.
```

7. System reboot and upgrade completion

- a. The message shown below will display to indicate that the system is going down in order to reboot, which will complete the installation.



```
Successfully copied upgrade files.
Going down for system reboot now ...
```

8. Validate the upgrade

- a. Log into the system again as user admin, password admin to access the administration menu.
- Verify that all VMs are running.
 - Verify the Ixia FLIX OS upgrade version.

Note: The admin screen will be similar to the image shown below. Ensure that it displays the same FLIX OS version as the upgrade.

```
Tue 17 Nov 2015 05:24:55 PM EET +0200
IxOS IP: 192.168.1.21
WebUI IP: 192.168.1.21
Ixia FlixOS version 2015.2.10001.00

Running VMs: bpsVM ixosVM

Quit
1 Set up network
2 Halt system (graceful)
3 Halt system (forced)
4 Reboot system (graceful)
5 Reboot system (forced)
p Change admin password
s Observe sensors
t Set system date and time
u Upgrade FlixOS
v Enable/Disable RDP to ixosVM on Web IP

OK
```

Technical Support

Note: If you receive messages similar to, “missing route to x.x.x.x re-adding it” or “RTNETLINK answers: No such process”, ensure that your DHCP server is accessible (if one is used in your setup) and that the IP configuration settings in both FLIX and Windows are correct.

If you have difficulties performing the upgrade, please contact Ixia Technical Support.

<http://www.ixiacom.com/support/>

support@ixiacom.com

+1 818 595 2599